

**The Arizona Republican Party**

**AZGOP.ORG**

POLITICAL EDUCATION AND  
PC TRAINING

# **2005 Handbook**

## **for Precinct Committeemen of the Arizona Republican Party**

Written by Linda Barber, Political and Education Director  
1524 West Otilia Drive, Tucson, Arizona 85705  
520-887-7970 [gopmom@att.net](mailto:gopmom@att.net)

PRINTED BY THE ARIZONA REPUBLICAN PARTY  
3501 NORTH 24TH STREET • PHOENIX, AZ 85016  
TEL 602.957.7770 • FAX 602.224.0932 •  
TOLL FREE 1-800-844-4065 E-MAIL [INFO@AZGOP.ORG](mailto:INFO@AZGOP.ORG)

---

## Table of Contents

The Republican Goal: Responsible Government 3

The Republican Party Organization 6

Symbols of Statehood 14

Working Your Precinct 15

Voter Registration Information 27

Volunteers: The Backbone of the GOP 35

Federal Elected Officials 40

State Legislature 41

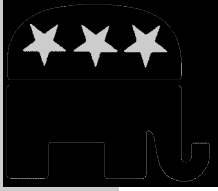
Arizona State Officials 44

RNC Contact Information 45

Maps 46

Excerpts from Title 16, Arizona Revised Statutes 48

Handbook Designed by Amie Zanck  
Revised by Andy J. Yates



# The Republican Goal: Responsible Government

## ORIGIN OF "REPUBLICAN"

### The Republican Goal: Responsible Government

Origin of "Republican"	3
The Beginning	3
Origin of Elephant	4
Origin of "G.O.P"	5

The designation of *Republican* to one of the two modern American political parties came into modern usage in 1854. However, its origin goes back to the time of Jefferson and was tied in with the use of the term *Democrat*.

Originally, *Republican* was a vague, neutral term, because the Constitution had

guaranteed to every state "a republican form of government."

In his first Inaugural Address in 1801, Jefferson said, "We are all Federalists; we are all Republicans," On the other hand, since the Federalists - the political branch of the second president, John Adams - were accused of being *aristocrats*, *Democrat* offered itself as the natural counterpart of this term.

## THE BEGINNING

*"...to do for a community of people whatever they need to have done, but cannot do at all or cannot so well do, for themselves, in their separate and individual capacities. In all that the people can individually do as well for themselves, government ought not to interfere."*

**-Abraham Lincoln**

It is this simple philosophy on which the Republican Party was founded.

The year was 1854. The Democrats and Whigs were the leading political parties, and the Free Soilers had recently gained enough strength to place candidates for election.

The issue was slavery. The emotions of the nation and its citizens rose as Congress debated the Kansas - Nebraska bill. Its passage would leave the legal question of slavery to the residents of these new states and upset a quarter - century ban on slavery in the remaining Louisiana Purchase territory.

On February 28, Major Alvan E. Bovay called a meeting in the Congregational Church in Ripon, Wisconsin. The men who met that night in that small farming community were Democrats, Whigs, and Free Soilers. They were brought together by a common belief - slavery was unconstitutional.

Out of that meeting came a resolution: A new party, to be named the Republican Party, would be formed if the Kansas - Nebraska bill passed.

It was only a short time before the Senate approved the bill. It was law - the extension of slavery was a real threat. Major Bovay called a second meeting.

On March 20, 53 local citizens gathered in the schoolhouse in Ripon. From their number they appointed a committee of five to form the new party. The local Free Soil and Whig organizations were dissolved.

The Ripon meetings were only the first of many

that year. In Michigan, Iowa, Ohio, Maine, Massachusetts, New York and other Northern states, citizens of similar persuasion met to form Republican organizations.

The first Republican convention was held in Jackson, Michigan on July 6, 1854. The crowd was so great, it could not be held in the town's largest ball. The business of the party had to be conducted in a grove of oaks near the county racetrack.

Under the label "Republican" or "anti -Nebraska" the Party made significant inroads that fall in its first test at the polls, winning 11 United States Senate seats. With the help of the "anti -Nebraskans" the new party was able to control and organize the House. Republican tickets were in office in Michigan and Wisconsin.

By 1856, the Republican Party was organized nationally. State delegates appointed a National Executive Committee, which was authorized to call a national nominating convention that June in Philadelphia.

## ORIGIN OF THE REPUBLICAN ELEPHANT

This symbol of the party was born in the imagination of cartoonist Thomas Nast and first presented in *Harper's Weekly* on November 7, 1874.

An 1860 issue of *Railsplitter*, and an 1872 cartoon in *Harper's Weekly* connected elephants with Republicans, but it was Nast who provided both parties with their symbols.

Oddly, two unconnected events led to the birth of the Republican elephant. James Gordon Bennett's *New York Herald* raised the cry of "Caesarism in connection with the possibility of a third term try for President Ulysses S. Grant. The issue was taken up by Democratic politicians in 1874, halfway through Grant's second term and just before the midterm

*"Our common country is in great peril, demanding the loftiest views and boldest action to bring it speedy relief. Once relieved, its form of government is saved to the world; its beloved history, and cherished memories, are vindicated; and its happy future fully assured, and rendered inconceivably grand. To you, more than to any other, the privilege is given, to assure that happiness, and swell that grandeur, and to link your own names therewith forever."*

**-A. Lincoln**

election, and helped affect Republican voters.

While the illustrated journals were depicting Grant wearing a crown, the *Herald* involved itself in another circulation-builder in an entirely different, nonpolitical area. This

was the Central Park Menagerie Scare of 1874, a delightful hoax perpetrated by the *Herald*. They ran a story, totally untrue, that the animals in the zoo had broken loose and were roaming the wilds of New York's Central Park in search of prey.

Cartoonist Thomas Nast took the two examples of *Herald* enterprise and put them together in a cartoon for *Harper's Weekly*. He showed an ass (symbolizing the *Herald*) wearing a lion's skin (the scary prospect of Caesarism) frightening away the other animals in the forest (Central Park). The caption quoted a familiar fable: "An ass having put on a lion's skin roamed about in the forest and amused himself by frightening all the foolish animals he met with in his wanderings."

One of the foolish animals in the cartoon was an elephant, representing the Republican vote -not the party, the vote - which was being frightened away for its normal ties by the phony scare of Caesarism. In a subsequent cartoon on November 21, 1874, after the election in which the Republicans did badly, Nast followed up the idea by showing the elephant in a trap, illustrating the way the Republican vote had been decoyed from its normal allegiance. Other cartoonists picked up the symbol, and the elephant soon ceased to be the vote and became the party itself; the jackass, now referred to as a donkey, made a natural transition from representing the *Herald* to representing the Democratic party that had frightened the elephant.

From William Safire's *New Language of Politics*,

---

revised edition, Collier Books, New York, 1972.

### ORIGIN OF "G.O.P"

A favorite of headline writers, GOP dates back to the 1870s and '80s. The abbreviation was cited in a *New York Herald* story on October 15, 1884: "'The G.O.P. Doomed,' shouted the *Boston Post*. The Grand Old Party is in condition to inquire."

But what GOP stands for has changed with the times. In 1875 there was a citation in the *Congressional Record* referring to "this gallant old party," and, according to *Harper's Weekly*, in the *Cincinnati Commercial* in 1876 to "Grand Old Party."

Perhaps the use of "the G.O.M." for Britain's Prime Minister William E. Gladstone in 1882 as "the Grand Old Man" stimulated the use of GOP in the United States soon after.

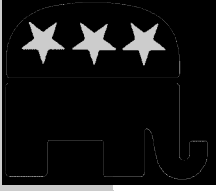
In early motorcar days, GOP took on the term "get out and push." During the 1964 presidential campaign, "GO - Party" was used briefly, and during the Nixon Administration, frequent references to the "generation of peace" had happy overtones. In line with moves in the '70s to modernize the party, Republican leaders took to referring to the "grand open party," harkening back to a 1971 speech by President Nixon to the dedication of the Eisenhower Republican Center in Washington D.C.: "The Republican Party must be the Party of the Open Door."

Indeed, the "grand old party" is an ironic term, since the Democrat Party was organized some 22 years earlier in 1832.

### I AM A REPUBLICAN BECAUSE...

- ★ I believe that the proper function of government is to do for the people those things that have to be done but cannot be done, or cannot be done as well by individuals, and that the most effective government is government closest to the people.
- ★ I believe that good government is based on the individual and that each individual's ability, dignity, freedom and responsibility must be honored and recognized.
- ★ I believe that free enterprise and the encouragement of individual initiative and incentive have given this nation an economic system second to none.
- ★ I believe that sound money management should be our goal.
- ★ I believe in equal rights, equal justice and equal opportunity for all, regardless of race, creed, age, sex or national origin. I believe that persons with disabilities should be afforded equal rights, equal justice and equal opportunity as well.
- ★ I believe we must retain those principles of the past worth retaining, yet always be receptive to new ideas with an outlook broad enough to accommodate thoughtful change and varying points of view.
- ★ I believe that Americans value and should preserve their feeling of national strength and pride, and at the same time, share with people everywhere a desire for peace and freedom and the extension of human rights throughout the world.
- ★ Finally, I believe that the Republican Party is the best vehicle for translating these ideals into positive and successful principles of government.

Republican National Committee, 310 First Street, S.E., Washington, D.C. 20003



# The Republican Party Organization

## The Republican Party Organization

Republican Party District Organization	6
Republican Party County Organization	6
Republican Party State Organization	7
Republican Party National Organization	7
Political Party	8
Arizona Republican Party Executive Committee	10

for election purposes.

From each Legislative District, the voters elect one State Senator and two State Representatives. They are the voters' representatives to the State Legislature. These are some of the Republican candidates that look closely to the Precinct Committeemen for help during the primary and general election campaigns.

The Legislative District organization is made up of elected and appointed Precinct Committeemen. District officers are elected by the committeemen after every general election in November. To be an elected officer in the district you must be an elected Precinct Committeeman.

## THE DISTRICT ORGANIZATION

As a Precinct Committeeman, you will fill a special place within your Legislative District. There are 30 Legislative Districts in Arizona. Each district is divided into precincts, which is functions as the political subdivision closest to the Republican voters.

Similar to a precinct, a district is a geographical area established by law

The district organization serves a number of different functions. It is there to serve as a circulation center for information and materials. Training sessions may lie offered to precinct workers. The district organization is the main link to the county and state party organizations. The districts hold regular meetings where experts on current issues and candidates are invited to speak. It is through these encounters that you can gain the knowledge to help you serve the Republican voters in your precinct.

## THE COUNTY ORGANIZATION

Arizona is divided into 15 counties whose boundaries are established by law. Most rural counties contain parts of several Legislative Districts within their boundaries. Pima and Maricopa counties have multiple Legislative Districts lying completely within county boundaries.

The county Republican organization is made up of a county committee, which consists of committeemen from every precinct in the county. Every county committee is headed by a county chairman, as well as other officers elected by county Precinct Committeemen.

The County Committee is responsible for the following:

- ★ Recruiting and encouraging qualified candidates to run.
- ★ Coordinating campaigns for local, state, and national offices.
- ★ Getting out the vote!

URBAN counties are subdivided into district organizations that consist of all Precinct Committeemen in each Legislative District. They assist their county chairman by organizing precincts and coordinating election activities in

each district.

RURAL counties may be subdivided by the county chairman according to geographical boundaries and may use area directors to assist in organizing the county.

The urban and rural counties are each headed by county chairmen. County chairmen are responsible for seeing that each precinct has active leadership and for providing those leaders with information and instruction. In addition, provisions must be made for every polling place to have well-trained election board workers for Election Day. The county chairman coordinates the countywide activities of the party.

**THE REPUBLICAN PARTY STATE ORGANIZATION**

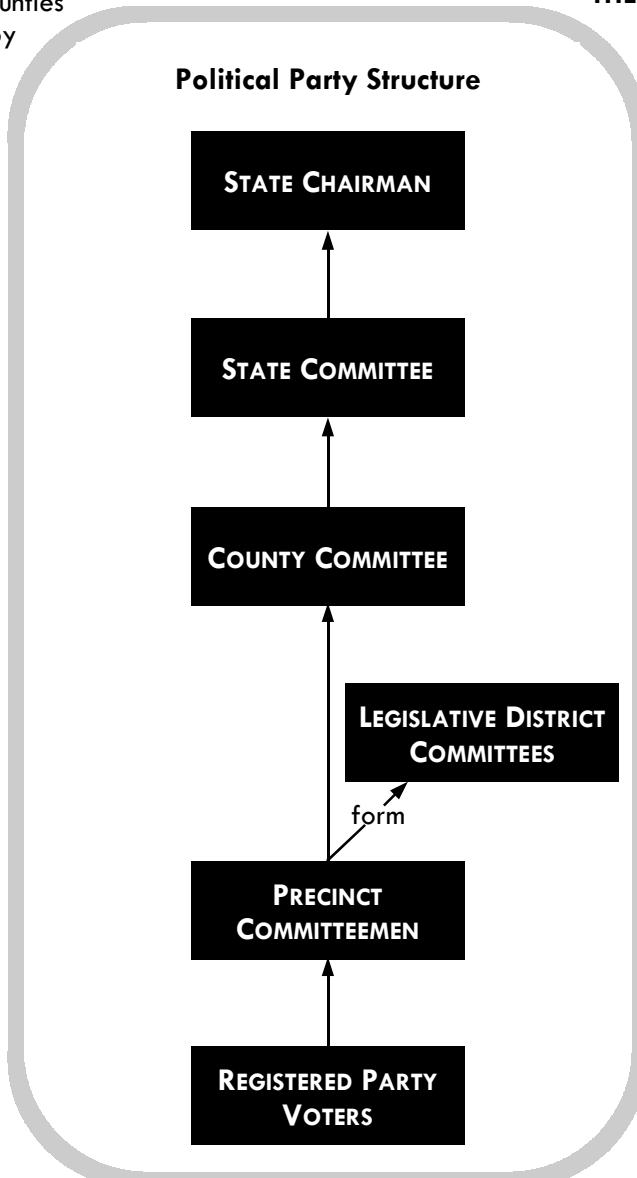
The State Committee is the statutory arm of the Arizona Republican Party. It is comprised of Precinct Committeemen who are elected from every county at the ratio of one member for every three elected Precinct Committeemen. It elects the state chairman and all state officers as provided by the law and state bylaws.

Republican Party business at the state level is conducted by the State Committee. It is

responsible for calling conventions, nominating candidates, filling vacancies (when other provisions are not made by law), and conducting the statewide campaign to carry the Republican ticket.

**THE REPUBLICAN PARTY NATIONAL ORGANIZATION**

Just as there are state and county committees, there is a Republican National Committee. It is composed of the State Chairman and the National Committeeman and Committeewoman from each state or territory. The National Committeeman and National Committeewoman are elected by each state every four years at their state convention where delegates are elected to attend the national convention. These people act as the governing body of the party on the national level and as liaison between the national and state committees. The Republican National Committee functions from a permanent headquarters at 310 First Street, S.E., Washington, D.C.



## ARIZONA REPUBLICAN PARTY STRUCTURE

### ELECTED OFFICERS OF STATE COMMITTEE

State Chairman	<i>Elected at the State Statutory Meeting</i>
First-Vice chairman	<i>Elected at the State Mandatory Meeting</i>
Second-Vice Chairman	<i>Elected at the State Mandatory Meeting</i>
Third-Vice Chairman	<i>Elected at the State Mandatory Meeting</i>
Secretary	<i>Elected at the State Statutory Meeting</i>
Treasurer	<i>Elected at the State Statutory Meeting</i>
Assistant Secretary	<i>Elected at the State Mandatory Meeting</i>
Assistant Treasurer	<i>Elected at the State Mandatory Meeting</i>
Sergeant-at-Arms	<i>Elected at the State Mandatory Meeting</i>
Assistant Sergeant-at-Arms	<i>Elected at the State Mandatory Meeting</i>
National Committeeman and National Committeewoman	<i>Elected at the State Convention held every Presidential Election Yr.</i>

### STATE EXECUTIVE COMMITTEE

Elected officers of the State Committee	
15 County Chairmen	<i>Elected at the January Meeting held after General Elections</i>
30 County Vice Chairmen	<i>Elected after the Primary Election, before the January Meeting.</i>
3 Members-at-Large from each Congressional District	<i>Elected at the State Statutory Meeting</i>
President, Arizona Federation	
Republican Women	

### STATE COMMITTEE

Members of the State Executive Committee	
1 member from each County for every three Precinct Committeemen	<i>Elected at the January Meeting held after General Elections</i>

### 15 COUNTY COMMITTEES

All Precinct Committeemen within the county	
Chairman	<i>Elected at the January Meeting held after General Elections</i>
2 Vice Chairmen	<i>Elected at the January Meeting held after General Elections</i>
Secretary	<i>Elected at the January Meeting held after General Elections</i>
Treasurer	<i>Elected at the January Meeting held after General Elections</i>

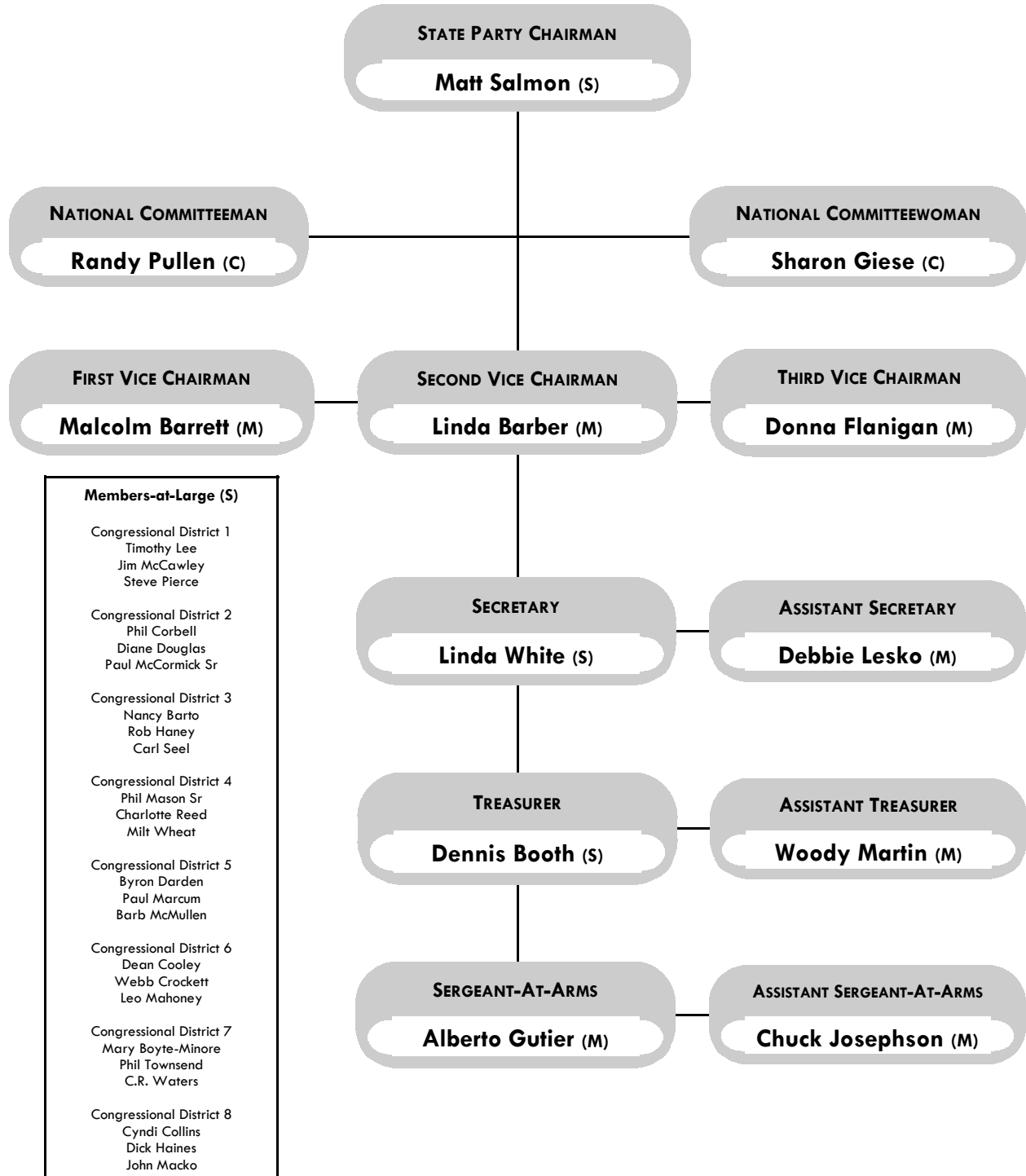
### 30 LEGISLATIVE DISTRICT COMMITTEES

All Precinct Committeemen within the District	
Chairman	<i>Elected at the organizational Meeting held after General Elections</i>
2 Vice Chairmen	<i>Elected at the organizational Meeting held after General Elections</i>
Secretary	<i>Elected at the organizational Meeting held after General Elections</i>
Treasurer	<i>Elected at the organizational Meeting held after General Elections</i>

### MORE THAN 3,000 PRECINCT COMMITTEEMEN

1 per precinct plus 1 additional for each 125 registered Republican voters as of March 1st of General Election year.	<i>Elected at the Republican Primary Election or appointed to fill a vacancy.</i>
--	---

# 2005 ELECTED OFFICERS OF THE ARIZONA REPUBLICAN PARTY



LEGEND

(S) Elected at Statutory Meeting (M) Elected at Mandatory Meeting (C) Elected at State Convention

## The 2005 Arizona Republican Party Executive Committee List

<b>Chairman</b>	The Hon. Matt Salmon	2739 E Nance St Mesa, AZ 85213	Wk (602) 424-1816 Fax (602) 424-1815	matt@upstreamaz.com
<b>First Vice-Chairman</b>	Mr. Mal Barrett	2054 Old Kettle Dr Prescott, AZ 86305	Hm (928) 776-1881 Wk (928) 776-1881 Fax (928) 771-1744 Cell (928) 776-1881	mbarrett@cableone.net
<b>Second Vice-Chairman</b>	Mrs. Linda Barber	1524 W Otilia Dr Tucson, AZ 85705	Hm (520) 887-7970 Fax (520) 887-4480 Cell (520) 240-6809	gopmom@att.net
<b>Third Vice-Chairman</b>	Mrs. Donna Flanigan	1033 E Silverwood Dr Phoenix, AZ 85048	Hm (480) 460-7796 Cell (480) 390-6265	donnafl99@aol.com
<b>Secretary</b>	Mrs. Linda White	6049 N Tocoito Pl Tucson, AZ 85718	Wk (520) 321-1492	lwhite@pimagop.com
<b>Treasurer</b>	Mr. Dennis Booth	6416 E Crabtree Pl Yuma, AZ 85365	Hm (928) 344-9389 Wk (928) 726-6500 Fax (928) 726-8082 Cell (928) 503-2510	dbooth@boothmachineryinc.com
<b>Sergeant-at-Arms</b>	Mr. Alberto Gutier	7825 N 14th Ave Phoenix, AZ 85021	Hm (602) 944-1015 Wk (602) 944-7979 Fax (602) 944-7979 Cell (602) 908-8900	albertogutier@aol.com
<b>Assistant Secretary</b>	Mrs. Debbie Lesko	6024 W Pershing Ave Glendale, AZ 85304	Hm (623) 878-9457 Wk (623) 878-9761 Cell (602) 413-0599	debbie@nationnet.com
<b>Assistant Treasurer</b>	Mr. Woody Martin Jr	10691 S Del Golfo Yuma, AZ 85367	Hm (928) 726-6500	pm1069@aol.com
<b>Assistant Sergeant-at-Arms</b>	Mr. Chuck Josephson	3229 E Seneca St Tucson, AZ 85716	Hm (520) 325-7631 Wk (520) 622-4262	chuckandjoan@msn.com
<b>National Committeewoman</b>	Mrs. Sharon Giese	9641 E Natal Ave Mesa, AZ 85212	Hm (480) 358-9334	sbgiese@aol.com
<b>National Committeeman</b>	Mr. Randy Pullen	4915 E Lafayette Blvd Phoenix, AZ 85018	Hm (602) 508-8883 Fax (480) 657-6529 Cell (602) 524-2241	RPullen8@cox.net

Office	Name	Address	Phone	E-Mail
<b>APACHE CHAIRMAN</b>	Marty Moore	PO Box 151 Saint Johns, AZ 85936	Hm 928-337-3804	mmooreaz@frontiernet.net
First Vice Chairman	Myma Udall	PO Box 69 Eagar, AZ 85925	Hm 928-333-4581	dudall39@cybertrails.com
Second Vice Chairman	Jack Husted	248 N. Becker Lake Rd. Springerville, AZ 85938	Hm 928-333-4965 Wk 928-333-3968	jhusted@whitemtns.net
<b>COCHISE CHAIRMAN</b>	Gail Griffin	PO Box 10 Sierra Vista, AZ 85636	Hm 520-458-5561 Wk 520-458-4388	griffing@theriver.com
First Vice Chairman	David Stevens	4145 S. Comanche Dr Sierra Vista, AZ 85650	Hm 520-378-0394	stevensd@cox.net
Second Vice Chairman	Tito Ross	606 E. Vista St. Bisbee, AZ 85603	Hm 520-432-3416	
<b>COCONINO CHAIRMAN</b>	John Echols	1636 W. Ashley Way Flagstaff, AZ 86001	Hm 928-527-333 Wk 928-213-0849	jechols@azgop.org
First Vice Chairman	LaVelle McCoy	33 Griffiths Spring Flagstaff, AZ 86001	Hm 928-525-1948	lavelle@infomagjc.net
Second Vice Chairman	Rick Krug	2845 N Prescott Rd Flagstaff, AZ 86001	Hm 928-774-1824	
<b>GILA CHAIRMAN</b>	Ken O'Dell	PO Box 2223 Pine, AZ 85544	Hm 928-476-5286	linken@mindspring.com
First Vice Chairman	Jim White	805 N McLane Rd Payson, AZ 85541	Hm 928-474-5999	
Second Vice Chairman	Pat Roberson	Box 1016 Tonto Basin, AZ 85533	Hm 928-479-3163	
<b>GRAHAM CHAIRMAN</b>	Kevin Peck	2421 E Hwy 70 Safford, AZ 85546	Hm 520-348-9127 Wk 928-428-7225	kpeck@cableone.net
First Vice Chairman	John Rhodes	1307 S Central Ave Safford, AZ 85546	Hm 520-428-3435	rhodesconstruction@hotmail.com
Second Vice Chairman	John Rhoads	PO Box 1170 Safford, AZ 85548	Hm 520-428-3169	Johnrhoads4@msn.com
<b>GREENLEE CHAIRMAN</b>	Bill Senne	Route 1, Box 508 Clifton, AZ 85533	Hm 928-687-1052 Wk 928-865-3631	bsenne@aznexus.net
First Vice Chairman	Tom Lines	PO Box 4 Duncan, AZ 85534	Hm 928-539-1520	
Second Vice Chairman	Gwen Lines	PO Box 4 Duncan, AZ 85534	Hm 928-539-1520	
<b>LA PAZ CHAIRMAN</b>	George Nault	PO Box 391 Bouse, AZ 85325	Hm 928-851-2219 Wk 928-669-6165	gnault@lapazassessor.net
First Vice Chairman				
Second Vice Chairman				
<b>MARICOPA CHAIRMAN</b>	Larry Pickard	18441 N 25th Ave Phoenix, AZ 85023	Hm 602-757-8104 Wk 602-433-1331	lppickard@cox.net
First Vice Chairman	Mame Haney	3241 E. Mescal St Phoenix, AZ 85028	Hm 602-996-1004	
Second Vice Chairman	Steve Johnson	8204 E Onza Ave Mesa, AZ 85212	Hm 480-358-0240	evensteven@eastvalleyweb.com
<b>MOHAVE CHAIRMAN</b>	Gary Watson	1285 Fraklin Ct Kingman, AZ 86401	Hm 928-753-3499	
First Vice Chairman	Helen Moran-Lennartz	2847 Ranchero Dr Lake Havasu City, AZ 86406	Hm 928-453-7166	lenn@citlink.net
Second Vice Chairman	Diana Heagle	3080 Erwin Ln Lake Havasu City, AZ 86404	Hm 628-764-4533	dianah7649@aol.com
<b>NAVAJO CHAIRMAN</b>	Sylvia Allen	PO Box 28 Heber, AZ 85928	Hm 928-535-3301 Wk 928-535-3555	syffal@wmonline.com
First Vice Chairman	Bill Faurot	220 South 12th Avenue Show Low, AZ 85901	Hm 928-532-8495	fourzero@whitemtns.com
Second Vice Chairman	Carla Bowen	5059 Sweeping Vista Dr Pinetop, AZ 85935	Hm 928-367-6400	carlab@realtyonline.com

Office	Name	Address	Phone #	E-Mail
<b>PIMA CHAIRMAN</b>	Judi White	1715 E Kleindale Rd	Hm 520-795-3046	judiwhite1@earthlink.net
First Vice Chairman	Parralee Schneider	11824 E. Wagon Trail Rd	Hm 520-749-0312	pmstucson@aol.com
Second Vice Chairman	Dick Dunbar	3110 N Jackson Ave	Hm 520-325-3990	
<b>PINAL CHAIRMAN</b>	Sharron Gill	10880 E. Cordova Street	Hm 80-671-9755	pinalcogop@aol.com
First Vice Chairman	Tommy Tucker	37965 S. Birdie Dr	Hm 520-818-1738	tuckerintl@aol.com
Second Vice Chairman	Bill Bridwell, Jr.	702 E. Saguario St	Hm 520-863-1733	billyb@c2i2.com
<b>SANTA CRUZ</b>	Gina Romero	2507 N Grand Ave	Wk 520-281-0455	gina@oremor.com
First Vice Chairman	Karla Cafarelli	PO Box 677		kcafarelli@ccd-usa.com
Second Vice Chairman	Raul Romero	766 N Sonora Pl		
<b>YAVAPAI CHAIRMAN</b>	Kenton D. Jones	1310 Ridge Drive	Hm 928-717-1883	Kenton.jones@eudoramail.com
First Vice Chairman	Rex Mason	301 Rosser	Hm 928-445-6674	aaopro@qwest.com
Second Vice Chairman	Jan Smith	2102 Stringfield Dr	Hm 928-776-8332	janlou@cableone.net
<b>YUMA CHAIRMAN</b>	Madeline Coil	3528 W 12th Pl	Hm 928-329-6879	mrcoil@adelphia.net
First Vice Chairman	Joe Melchionne	13477 E 44th Dr Yuma, AZ 85367	Hm 928-342-5614	mel15@mindspring.com
Second Vice Chairman	David Lara, Jr.	PO Box 3878 San Luis, AZ 85349	Hm 928-627-2979	desertwater@aol.com
<b>Ex Officio Members</b>				
District 4	Lyle Tuttle	11662 W Pincushion Ct Surprise, AZ 85374	Hm 623-583-2354	ltuttle24@earthlink.net
District 6	Kerry Martin	23227 N 23rd Pl Phoenix, AZ 85024	Hm 480-502-8352	kerry@grassrootsprograms.com
District 7	Nancy Barto	3631 E. Rockwood Dr Phoenix, AZ 85050	Hm 602-569-4742	thebartos@cox.net
District 8	Donna Reagan	11000 N 130th Place Scottsdale, AZ 85259	Hm 480-326-2971	Donna_reagan@yahoo.com
District 9	Jackie Miller	11223 N Coggins Dr Sun City, AZ 85351	Hm 623-202-5648	jmgolf@msn.com
District 10	Scott Stewart	9044 North 52nd Drive Glendale, AZ 85302	Hm 623-915-0182 Wk 602-957-7770	Stewart-scott@msn.com
District 11	Rob Haney	3241 E Mescal St Phoenix, AZ 85028	Hm 602-996-1004	R_h_haney@yahoo.com
District 12	Sandy Weiers	5025 N 81st St Glendale, AZ 85303	Hm 623-772-9962	sweirs@cox.net
District 13	Jason Wopperer	12160 W Mohave St Avondale, AZ 85323	Hm 623-328-9616	Jason.jay.wopperer@lmco.com

Office	Name	Address	Phone #	E-Mail
--------	------	---------	---------	--------

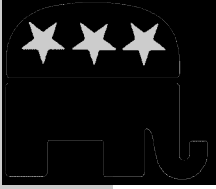
**EX-OFFICIO MEMBERS  
Maricopa County**

District 14	Chuck McCracken	3847 W Myrtel Ave Phoenix, AZ 85051	Hm 602-973-3064	iqcando@extremezone.com
District 15	Milt Wheat	1826 W. Pierson Street Phoenix, AZ 85015	Hm 602-265-4958	milt@miltonwheat.com
District 16	Don Goldwater	4536 W Siesta Way Laveen, AZ 85339	Hm 602-224-5525	dongoldwater@yahoo.com
District 17	Gene Gansel	2128 E. Gemini Dr Tempe, AZ 85283	Hm 480-752-9762	g2p@cox.net
District 18	Jeff Grosco	2425 E. Florian Ave Mesa, AZ 85204	Hm 480-892-5672	azspeaker@aol.com
District 19	Jared Langkilde	PO Box 22035 Mesa, AZ 85277	Hm 480-641-8874	jal92@email.byu.edu
District 20	Tom Morrissey	13043 South 41 Street Phoenix, AZ 85044	Hm 480-598-0012 Wk 602-255-0098	tpmorrissey@cox.net
District 21	John Rutledge	3121 S. Vineyard Mesa, AZ 85210	Hm 480-892-5278	rutledgej@aol.com
District 22	Bill Norton	1689 E Tradewind Ct Gilbert, AZ 85234	Hm 480-632-2335 Wk 480-539-6566	bill@thesharperedge.com

**Ex-Officio Members  
PIMA COUNTY**

District 26	David Smith	3357 W Camino Alto Tucson, AZ 85742	Wk 520-579-5548	dmsmith@assocfire.com
District 27	David Wagemaker	PO Box 22426 Tucson, AZ 85734	Hm 520-792-3132	dawagemaker@cox.net
District 28	Wil Westholm	8432 E Kenyon Dr. Tucson, AZ 85710	Hm 520-290-0994	
District 29	Mike Jenkins	8280 E Nicaragua Dr Tucson, AZ 85730	Hm 520-751-8967	jenkinsm120548@cs.com
District 30	Jim Coniglio	761 N Circle D Way Tucson, AZ 85748	Hm 520-546-3684	jconiglio@earthlink.net
Maricopa County HQ		3501 N 24th St Phoenix, AZ 85016	Hm 602-957-3999 Wk 602-553-8491	
Mohave County HQ		2176 McCulloch Lake Havasu City, AZ 86403	Hm 928-855-8006 Wk 928-855-8138	
Pima County HQ		5447 E 5th St Tucson, AZ 85711	Hm 520-321-1492 Wk 520-326-7229	
Yavapai County HQ		112 E Union St Prescott, AZ 86303	Hm 928-776-4500	
Yuma County HQ		629 N 2nd Ave San Luis, AZ 85365	Hm 928-317-9120 Wk 928-317-9097	
Yuma County HQ		PO Box 494 Yuma, AZ 85366		
<b>Arizona Republican Party HQ</b>	3501 North 24th Street Phoenix, AZ 85016	Wk 602-957-7770 FAX 602-224-0932 Toll Free 1-800-844-4065		

State Party Staff	Executive Director	Bill Christiansen	Operations Director	Becca Luby	Northern AZ Field Director	John Echols
WEB Sites: WWW.AZGOP.ORG	Political Director	Scott Stewart	Office Manager	Andy J. Yates		
E-Mail: Info@AZGOP.ORG	Communications Director	Colin McCracken	Executive Assistant	Kent Walter		



## Symbols of Statehood

**Year of Statehood:** 1912

**Population:** 4,778,332 in 1999

**State Capitol:** Phoenix

**State Motto:** Ditat Deus (God Enriches)

**Largest City:** Phoenix

**State Nickname:** Grand Canyon State

**State Size:** 113,909 square miles



**State Flag:** The lower half of the flag is a blue field, the upper half divided into thirteen equal segments, six light yellow and seven red. In the center of the flag is a copper-colored five-point star. The red and the blue are the same shades as the flag of the United States of America, and it measures four feet high and six feet wide. The flag was designed by Charles W. Harris and first sewn by Nan D. Hayden. Blue and yellow are the Arizona colors, and red and yellow are the colors of the Spanish Conquistadors, headed by Coronado, who first came to Arizona in 1540. The copper star represents Arizona as the largest producer of copper in the nation.

**State Seal:** Arizona's main enterprises and attractions are represented in the seal. In the background of the seal is a range of mountains with the sun rising behind the peaks. At the right side of the mountains is a water storage reservoir and a dam, with irrigated fields and orchards. There are cattle grazing on the right, and a quartz mill and a miner with a pick and shovel on the left.

**State Songs:** "Arizona March Song" and "Arizona"

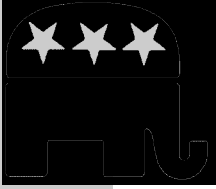
**State Flower:** Blossom of the Saguaro cactus. This pure white flower blooms on the tips of the saguaro cactus during May and June

**State Gem:** Turquoise. It's a blue-green, waxy-surfaced stone used for centuries in Southwest Indian Jewelry. It can be found throughout the Southwest and is composed of hydrous oxide of aluminum and copper.

**Official Neckwear:** Bola Tie. It originated in Arizona and is usually made by silversmiths and leather makers in almost every size and shape, most often with silver and turquoise.

**State Tree:** Palo Verde, which signifies "green stick." It blooms a brilliant yellow-gold in April or May.

**State Bird:** Cactus Wren. It measures 7 to 8 inches in length, and its back is brown with white spots, and its throat is lighter colored with black spots. Its bill is curved down and there's a white line over each eye. Cactus wrens eat insects, seeds, and fruit. They often build their nests inside a cactus to protect them from predators.



# Working Your Precinct

## THE REPUBLICAN PARTY PRECINCT ORGANIZATION

The precinct is the smallest, yet most important political subdivision in Arizona. Technically, a precinct is a geographical area established by law for election purposes.

Each precinct in Arizona is entitled to one Precinct Committeeman from each major political party. An additional committeeman is authorized for every 125 voters registered in the party in the precinct, as reported on March 1st of the general election year.

Precinct Committeemen candidates run for election every two years in their party's primary election. In a primary election, each major political party selects its candidates for the upcoming general election, as well as its Precinct Committeemen. Most committeemen are elected to their position through this process, while some may be appointed to fill a current vacancy.

If there are more candidates for Precinct Committeeman than there are vacancies, the ones receiving the highest number of votes in the precinct are elected. To retain your office, you must

"It is your job to make sure that the Republicans in your precinct are informed and prepared to get their vote to the ballot."

"To retain your office, you must run for re-election every two years."

run for re-election every two years.

You are the only party official elected directly by the Republican voters. Within your precinct, you and your fellow Precinct Committeemen represent the

Republican Party to the people. You are the bridge between the voters and the candidates and elected officials. It is your job to make sure that the Republicans in your precinct are informed and prepared to get their vote to the ballot.

You may be asked to help circulate petitions for Republican candidates or to walk your precinct with an elected official. The work you do in your precinct with your neighbors can make the deciding difference in any election!

Each precinct is different. That is why it is so important to have active Precinct Committeemen working with neighbors to obtain the best results. If you live in rural Arizona the nature of your work will be quite different from the work in the urban areas. There are, however, some basic items that need to be covered no matter where your precinct is located.

### Working Your Precinct

Republican Party Precinct Organization	15
Basic Work for	16
Tools & Glossary	17
Lists	17
Before Election	17
Election Day	19
Ballot Security	20
Useful Templates for PC Work	22

---

## BASIC WORK FOR PRECINCT COMMITTEEMEN

**Elect** a Captain in your precinct to assume overall precinct leadership.

**Divide** your precinct into geographical areas and assign portions of the precinct to each Precinct Committeeman.

**Recruit** precinct volunteers and assign each volunteer specific blocks (or areas) for door-to-door and telephone activities.

**Ensure** that Voter Registration Forms are always readily available to voters in your precinct.

**Monitor** your precinct, on a frequent basis, for new Republican residents, as well as families who will have members turning 18 years of age before the next election.

**Maintain** up-to-date records of the current Republican residents of your precinct.

**Attend** precinct meetings to be involved in updating records, planning strategy, and other organizational activities.

**Attend** district and/or county Republican meetings. These will be great places to share information and ideas.

**Assist** your Precinct Captain in recruiting election board workers.

**Coordinate** with your Precinct Captain in establishing Election Day Get-Out-the-Vote (GOTV) committees and a Precinct Election Headquarters.

**Distribute** election information and candidate literature to the voters in your precinct.

## PRECINCT COMMITTEEMEN TOOLS AND GLOSSARY

### Official Roster

The list of registered voters in a precinct as provided by the Voter Registration/County Recorder's Office.

### Perfect List (Updated List)

A list of voters in a precinct that has been called or contacted to correct any bad information such as phone numbers or having moved from precinct.

### Walking List

A list of registered voters that is organized by street numbers.

### Tear Sheets

A copy of the list of voters who have cast a ballot on Election Day. Tear sheets are often prepared by the clerk of the election board and are provided at each polling place when proper identification is presented.

### Block Workers

Volunteers who help you by keeping track of a small geographical portion of the precinct, usually their own blocks of neighbors.

### Election Board Workers

Individuals working as inspectors, judges, or clerks at the polls on election day. They may be recommended by you or your Precinct Captain through the District and County Chairmen. The County Division of Elections/Board of Supervisors makes the final selection. The County Boards of Supervisors determine the compensation for these workers.

"Frequent contact with your neighbors is the secret to success in a political campaign. Large media campaigns have a place in the political process, but the GRASS ROOTS organization gets the votes in the ballot box!"

*(Continued on page 17)*

---

(Continued from page 16)

### **Phone Bank**

A group of volunteers or paid workers who make a large number of phone calls into targeted areas, usually to get out the vote, to identify problems, or to establish name identification.

### **Precinct Captain**

A Precinct Committeeman who is chosen to lead the other precinct workers in organizing the work in a precinct.

### **Early Voting (Vote-by-Mail) Ballot**

The official election ballot, which may be requested by mail and voted by mail. The Arizona Republican Party mails a request form to all registered Republican voters each General Election. Some voters may need assistance from precinct workers to properly complete the early voting process.

## **LISTS**

Several county or district organizations of the Republican Party have developed or are developing the technology to produce lists of registered voters. If a Precinct Committeeman's county or district organization has the capacity to provide lists of registered voters for each precinct, the Precinct Committeeman should submit requests for walking lists directly to the county or district organization.

The State Party Computer Services Office is additionally equipped to respond to requests from County and District Chairmen. Because, especially during the time of an election, the Computer Services Office is inundated with requests for lists of registered voters, the State Party advises that Precinct Committeemen coordinate with their county or district chairman to minimize the requests from each political organization.

For each request, the following should be determined:

- 1. The Geographic area of interest:** Lists may be generated for a precinct, district, or county.
- 2. Party Registration:** Lists may be generated that include all registered voters or only those of a particular party registration.
- 3. Voting History:** Generally speaking, persons who voted in the last two General Elections will provide a solid list of "active" voters.
- 4. The purpose for the request:** Lists may be sorted in ALPHA order or WALKING order for door-to-door activities.

### CLEANING UP YOUR LIST

(Especially if you are working alone in your precinct)

Use postcards (now mailing at 23 cents each). If you are on a budget, mail 25 each month to stay in touch with your Republican neighbors. Be sure to put your return address on the cards so they will be returned to you if they are not deliverable. Those returned cards will help you clean up your list and those that are delivered will introduce you to your precinct. An example, which may be reproduced, follows on the next page.

### **BEFORE ELECTION DAY**

- ★ **Organizational Steps**
- ★ **Early Voting**
- ★ **Voter ID Precinct Canvass**

### ORGANIZATIONAL STEPS

- Organize those elected as Precinct Committeemen and distribute responsibilities.
- Be prepared to pass petitions for Republican candidates before filing date (the last week in June).
- Recruit extra help (block workers, telephone committees, drivers) to insure preparations are completed (see Precinct Inventory form).



**GREETINGS, FELLOW AMERICANS!**

I am your neighbor...You and I live in a free country. It is our responsibility to keep it so!

My job is to answer any questions from people in our neighborhood about voting and elections.

Call me anytime I can be of help.

**YOUR REPUBLICAN PRECINCT WORKER**

Name \_\_\_\_\_

Address \_\_\_\_\_

Phone \_\_\_\_\_ E-Mail \_\_\_\_\_



**ARIZONA REPUBLICAN PARTY**



**GREETINGS, FELLOW AMERICANS!**

I am your neighbor...You and I live in a free country. It is our responsibility to keep it so!

My job is to answer any questions from people in our neighborhood about voting and elections.

Call me anytime I can be of help.

**YOUR REPUBLICAN PRECINCT WORKER**

Name \_\_\_\_\_

Address \_\_\_\_\_

Phone \_\_\_\_\_ E-Mail \_\_\_\_\_



**ARIZONA REPUBLICAN PARTY**



**GREETINGS, FELLOW AMERICANS!**

I am your neighbor...You and I live in a free country. It is our responsibility to keep it so!

My job is to answer any questions from people in our neighborhood about voting and elections.

Call me anytime I can be of help.

**YOUR REPUBLICAN PRECINCT WORKER**

Name \_\_\_\_\_

Address \_\_\_\_\_

Phone \_\_\_\_\_ E-Mail \_\_\_\_\_



**ARIZONA REPUBLICAN PARTY**



**GREETINGS, FELLOW AMERICANS!**

I am your neighbor...You and I live in a free country. It is our responsibility to keep it so!

My job is to answer any questions from people in our neighborhood about voting and elections.

Call me anytime I can be of help.

**YOUR REPUBLICAN PRECINCT WORKER**

Name \_\_\_\_\_

Address \_\_\_\_\_

Phone \_\_\_\_\_ E-Mail \_\_\_\_\_



**ARIZONA REPUBLICAN PARTY**

- Establish precinct objectives.
- Adopt a precinct timetable.
- Schedule a workday to prepare for Voter ID Canvass.
- Organize telephone absentee ballot survey.
- Plan distribution of candidate literature.
- Select Precinct Headquarters for Election Day.
- Make sure to check for unregistered Republican voters before the 29-day cutoff.

- Names of voters who are no longer in the precinct

**Canvass Tools:**

- Precinct Canvass Forms
- Voting Information Fact Sheet
- Readable maps
- Calling cards or ID badges for precinct workers
- Correct and update precinct records

VOTE-BY-MAIL BALLOTS

- Check precinct for voters who want mail ballots 30-45 days before (primary and general). This calling help update your list
- County Recorders will start to mail ballots 30 days prior to election

VOTER ID CANVASS

House-to-house calling produces new voters, new volunteers and sometimes even financial contributors. It can also produce that one extra vote per precinct that has often won an election.

**Information to be collected:**

- Names and party affiliation of all adult residents
- Names of children becoming 18 years of age before the general election or who are away at college or in the military
- Names of all Republicans willing to help
- Names of disabled voters and others who will obviously need vote-by-mail ballots

**ELECTION DAY**

"Main Objective: Increase Republican votes cast by at least 1%"

PACK OF VOTERS ON ELECTION

Index of this handbook are columns of ranging from 1-1000. Using these correspond to the numbers on your general voter list, you may cross off the number of each person who has voted during the day (according to the tear sheets from your polling place). This will give you a 1 or 2 page overview of the turnout in your precinct.

GET-OUT-THE-VOTE

**General Instructions**

**Upon receiving the roster for the precinct you are working:**

1. Mark all Republican voters (Hi-Liter markers work well)
2. Make corrections on the roster from your updated precinct list
3. Mark newly registered Republicans (registered during the 6-8 weeks before the cutoff) with a different color or symbol

4. Call newly registered Republicans before election day as a service to them, especially regarding the polling place and candidate information.

**On Election Day**, you will have a letter of permission on official party letterhead and signed by the County Chairman, that will allow you to pick up tear sheets at the polling location in your precinct.

This will also give you permission to see the list of Republicans who have requested vote-by-mail ballots so that you can check them off of your roster.

On your roster, check off the names of the Republicans who have voted according to the tear sheets (and early voting list).

You may pick up tear sheets as often as you wish. You must have the permission letter each time and poll workers will only give you completed tear sheets (50 names/sheet).

Starting at 4:00 or 5:00 p.m. on Election Day (right after picking up the latest tear sheets and checking the names off of the roster), **CALL THE REPUBLICANS WHO HAVE NOT YET VOTED!** They may have forgotten--they may need a ride--you are calling to provide a service to the Republicans in your precinct.

You may want to start calling earlier in the day, especially if your precinct has a number of retired residents.

You may figure the percentage of Republicans who have voted at various times of the day by dividing the number of Republicans who have voted by the total number of Republicans in your precinct.

Total Republicans in Precinct

Total Republicans voted by noon

$50 \text{ divided by } 200 = 25\% \text{ of Republicans voted by noon.}$

As you figure these percentages, please call them to the Precinct HQ/District Chairman so they will be available for candidates or Republican headquarters.

Your district or county organization may ask you to turn in your tear sheets during the 10 days after the election. The information as to who voted in the primary and general elections is now available in most counties on the computer voter registration rolls.

## BALLOT SECURITY

As you work your precinct and become acquainted with Election Day procedures and board workers, you may notice that polling place procedures are not going smoothly. Perhaps there is an unusually high number of "questioned ballots" (ballots from people whose names are not on the official roster). Perhaps there is a great deal of electioneering going on outside the polling place. Arizona elections have been very clean compared to some other places. That is precisely the reason we must be alert for possible problems.

The term "ballot security" refers to the process of monitoring elections to assure that proper procedures are followed. Ballot security covers all phases of the electoral process, including the printing of ballots, registration of voters, voting procedures, transportation of ballot boxes and counting and reporting of votes.

### REMEMBER!!!!

You may pick up tear sheets during the day at your convenience. The most important time is the 4:00 to 5:00 p.m. pickup. It will make it easier if you have checked the names off on your roster once or twice during day so that you are ready to go to work quickly at 5:00 p.m.

**GET THOSE REPUBLICANS TO THE POLLS!!**

Republican Party to conduct a ballot box is established by the law as an important safeguard of the electoral process. The goal of our ballot security is to protect the right of every voter to vote by preventing cheating.

The Republican Party has a ballot box officer in each precinct with a chairman to oversee the process. A Republican ballot box officer is available and will provide instructions to undertake the process. It is important that ballot security be maintained. Participants should be informed regarding election laws

---

and exactly what is allowed when making sure a polling place is "secure". If you feel ballot security may be necessary at your polling place, please work with your district and/or county chairman. Be sure they are working in coordination with the State Republican Ballot Security Chairman, who can be contacted through state party headquarters.

Before anyone undertakes a ballot security program, they should receive training and guidance from those who have experience.

A plan for ballot security is especially important in areas where there have been serious questions about voting procedures.

**PRECINCT INVENTORY**

Precinct \_\_\_\_\_ District/County \_\_\_\_\_

Registration: Rep \_\_\_\_\_ Dem \_\_\_\_\_ Other \_\_\_\_\_ Date \_\_\_\_\_

---

NAME PHONE

Precinct Captain:

Precinct Committeemen:

( \_\_\_ Allotted)

Election Board Workers:

Blockworkers:

Drivers:

**Election Day HQ:**

---

**PRECINCT CANVASS FORM**

Precinct \_\_\_\_\_

Street \_\_\_\_\_

**Number Last Name First Name Registration Phone Comments**

**VITAL VOTING INFORMATION FORM**  
**QUESTIONS MOST FREQUENTLY ASKED**

Precinct: \_\_\_\_\_ Polling Place: \_\_\_\_\_

Legislative District: \_\_\_\_\_ Congressional District: \_\_\_\_\_

Congressman: \_\_\_\_\_

Senators: John McCain- R & Jon Kyl- R

State Senator: \_\_\_\_\_

State Representatives: \_\_\_\_\_

Registration Requirements: 29 days before an election

Date of Close of Registration: Primary \_\_\_\_\_ General \_\_\_\_\_

Precinct Captain: \_\_\_\_\_

Can an Independent vote in the primary? Yes

Who can vote by Early Voting Ballot? Anyone who requests one from their County Recorder.

County Chairman: \_\_\_\_\_

District/Area Chairman: \_\_\_\_\_

What does our Party stand for? \_\_\_\_\_

\_\_\_\_\_

Republican Clubs in the vicinity: \_\_\_\_\_

\_\_\_\_\_

Where do I get bumper stickers, buttons, etc? \_\_\_\_\_

\_\_\_\_\_

How can I help the Republican Party? \_\_\_\_\_

\_\_\_\_\_

Who are the Republican candidates? \_\_\_\_\_

\_\_\_\_\_

\_\_\_\_\_

## TELEPHONE VOTE BY MAIL BALLOT SURVEY

Using the most updated and correct lists you have available, call all Republican households in the area you are working. The following. sample conversation might be helpful:

**VOLUNTEER:** Hello, this is \_\_\_\_\_, the Republican Committeeman for this area. A very important election is only \_\_\_\_ weeks away, and we are trying for a 100% Republican turnout. We are polling our Republicans to see if they will want to vote by mail in this election.

**VOTER:** I thought you had to be out of town to vote by mail.

**VOLUNTEER:** No. It is much easier to obtain a vote by mail ballot nowadays. All you need to do is request one in writing to the County Recorder. You need no special reason.

**VOTER:** Thank you for calling. Maybe I will vote by mail. What do I do?

**VOLUNTEER:** I will get you a request form to send to your County Recorder. Then your ballot with instructions, the official application, and a return envelope will be sent to you. Your request must be in the Recorder's Office no later than 10 days before an election. It must arrive back at the Recorder's office by the time the polls close on Election Day. When you receive your ballot in the mail, please call me at this number \_\_\_\_\_ if you need any assistance or have any questions.

COUNTY RECORDER \_\_\_\_\_  
ADDRESS \_\_\_\_\_  
\_\_\_\_\_  
PHONE \_\_\_\_\_  
\_\_\_\_\_

### ELECTION DAY GET-OUT-THE-VOTE TELEPHONE SCRIPT

Many elections are won or lost by less than ten votes. Your election day telephone operation could determine whether or not your candidates win the election. **NOBODY WINS WHEN NOBODY VOTES!**

**VOLUNTEER:** Hello, this is \_\_\_\_\_, a Republican volunteer. Our records indicate you have not voted yet today. We are trying for 100% turnout of all Republicans in this precinct so we can win. Do you need a ride?

**VOTER:** No. I am waiting for my husband to get home from work. We always go together.

**VOLUNTEER:** Good! Thank you so much. We appreciate your support.



**VOLUNTEER:** Hello, this is \_\_\_\_\_, your Republican Precinct Committeeman. Our records indicate you have not voted yet today. We are trying for 100% turnout of all Republicans in this precinct so our candidates can win. Do you need a ride or have you voted in the past hour?

**VOTER:** No. I just thought I would go down later today.

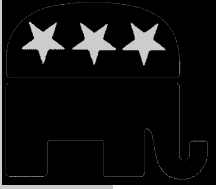
**VOLUNTEER:** There is often a line later in the day, especially after work. We are hoping many people will vote as early as possible to keep lines shorter for those coming in from work to vote.

**VOTER:** Thanks. I didn't think of that. I will go to the polls right now.

**VOLUNTEER:** Thank you so much. We appreciate your participation.



**Note: If you treat all of your precinct work as a service to your neighbors, these election day calls will be appreciated as well as productive.**



# Voter Registration Information

## QUALIFICATIONS TO BE A REGISTERED ARIZONA VOTER

To be eligible to register to vote in Arizona, a person must be:

- A citizen of the United States
- 18 Years old on or before the date of the next general election
- A resident of Arizona for 29 days preceding the election
- Able to write his or her name or make his or her mark (unless physically disabled)
- Not convicted of a felony or treason (unless restored to civil rights)
- Not adjudicated an incapacitated person (see A.R.S 14-5101)

If the above qualifications are met, a Registration Form should be completed, signed, and returned to the office of the County Recorder, where the person registering resides.

- The deadline for registering to vote is 29 days before an election..

The County Recorder will send notification of receipt of form.

## PARTY PREFERENCE

At Primary Elections, votes are cast only for the candidates of the political party indicated on the form as “party preference”.

In addition, since the passage of the Arizona Open Primary initiative persons not registered with the major parties may vote in primary elections by designating the party ballot they wish to vote.

### Voter Registration Information

Voter Qualifications	27
Party Preference	27
Handicapped Citizens	27
Points to Remember	27
Voter Registration	28
Common Q&A on Voting Procedures	29
County Recorders	30
Election Information	33

## HANDICAPPED CITIZENS

Handicapped citizens may contact the County Recorder/Elections Department for information about polling places access, voting at home, assistance a the polling place and all other election related procedures.

## POINTS TO REMEMBER

You must re-register whenever you:

- Move
- Change your name
- Wish to change your political party affiliation.

The locations of voting places are published for your convenience before each election. Early voting begins on October 5<sup>th</sup> and continues until the State General Election Day, November 7<sup>th</sup>. Voters should contact their county elections office or visit its website to obtain early voting locations.

Vote-by-mail ballots may be requested from the County Recorder of the voter's county of residence. Additionally before each General Election, the State Republican Party mails a vote-by-mail application to all registered republicans in Arizona.

If a voter requests an early ballot, receives it, and then decides to vote at his regular polling place, he must carry the entire early voting ballot package and surrender it to the Inspector at the polling place.

## VOTER REGISTRATION

Every Republican should consider deputy registrar. Even though the to allow self-registration we must out those Republicans who are not see that they do register. In fact, it important than ever that we do th

### REGISTRATION PLAN

The key to successfully building party an organized selective registration plan that concentrates on Republicans -- not a random door-to-door drive that registers equally as many Democrats.

When developing a registration plan within your district or county, the following elements should be included:

- Adequate and properly trained volunteers
- A knowledge of election laws and a calendar of legal dates
- An analysis of your own precinct or district Incentives and rewards

When canvassing your precinct, you can determine the political affiliation of the residents by saying

*"I'm a volunteer worker (precinct committeeman) for the Arizona Republican Party. Are there any unregistered Republicans living here who would like to register to vote?"*

If they respond with "no," simply thank them for their time and go to the next house. If their answer is positive, however, you can offer to register them on the spot or give them a form to do it themselves. If they elect to fill out their own form, try to follow up by offering to deliver it to the County Recorder for them. You can them drop it in the mail yourself and you will know that it was completed.

### SPECIAL TARGETS

In addition to canvassing your own precinct, special targets for registration drives should include:

"Remember that voter registration is an ongoing function. Always be alert to new possibilities of adding to the Republican rolls."

years old): Contact local high community colleges to see if you registration table on particular ering 18 year olds. This should be long as it appears to be non-ever, choose your schools

**Naturalization:** A group such as a omen's Club should attend ceremonies with plenty of forms. New citizens are always eager to start exercising their new citizenship rights and responsibilities.

**Shut-Ins, invalid, Nursing Homes Residents, Senior Citizens:** The district or county chairman could appoint special learns to visit senior centers, hospitals and nursing homes.

## COMMON QUESTIONS& ANSWERS

### Q & A

- How do I register?
- Where do I vote?
- Am I registered?
- What districts am I in?
- Do I need to register?
- Can I vote by mail?
- I didn't vote last time. Am I still registered?

### Q: What are the requirements for voting in Arizona?

A: To register to vote:

- You must be a citizen of the United States.
- You must be a resident of Arizona.
- You must be 18 years of age or more on or before the day of the next General Election.
- If you have been convicted of a felony, your civil rights must have been restored.

### Q: How do I register?

A: Forms are available at any Department of Motor Vehicles location, some libraries and at the various County Recorders offices. If you have trouble finding a form, you may call or e-mail Party Headquarters at (602)957-7770 or [info@azgop.org](mailto:info@azgop.org).

### Q: Am I Registered?

A: If you registered to vote and received your voter identification card, you should still be registered to vote, even if you've missed an election cycle.

### Q: Where do I vote?

A: If your registration is current, your household should receive a sample ballot and information on where you need to vote. If you do not receive information from the county about two weeks prior to the election, your registration information is not current and you need to re-register.

### Q: Do I need to re-register?

A: If you have moved since you last registered, if you have changed your name, changed your party affiliation you need to re-register.

### Q: Can I vote by mail?

A: Voting by mail has become a major part of elections in the last few years. If you would like to vote by mail, you need to inform your local county elections department. County elections will need a copy of your signature, so you must either write or FAX your request for a mail in ballot to them.

The request for ballots must be received at least 11 days prior to the election. Requests may be sent in 90 days prior but ballots will not be mailed until 33 days prior to the election. Exact deadlines for voting by mail can be obtained from the local county recorder.

### Q: I didn't vote. Am I still registered?

A: Yes. You should still be on the voter rolls.

### Q: What District am I in?

A: If you have your voter ID card, your congressional district, state legislative district should be on the back of the card. If you don't have your voter ID card, you can call your local county recorder to find out where you vote and check on your registration.

## COUNTY RECORDERS AND ELECTION DIVISIONS

County Recorders are charged with the maintaining the voting rolls in the state of Arizona. Contact them when you have questions about your registration or eligibility to vote.

### APACHE COUNTY

Apache County Recorder

**LeNora Johnson**

PO Box 425  
St. Johns, Arizona 85936-0425  
PHONE 928/337-7514  
FAX 928/337-7676  
TDD 928/337-4402

Email [recorder@co.apache.az.us](mailto:recorder@co.apache.az.us)

Apache County Elections

**Penny L. Pew, Director**

PO Box 428  
St. Johns, Arizona 85936  
Phone 928/337-7537  
FAX 928/337-2003

Email [ppew@co.apache.az.us](mailto:ppew@co.apache.az.us)

### COCHISE COUNTY

Cochise County Recorder

**Christine Rhodes**

PO Box 184  
Bisbee, Arizona 85603-0184  
PHONE 520/432-8356  
FAX 520/432-8368  
TDD 520/432-8360

Email [sgruhn@co.cochise.az.us](mailto:sgruhn@co.cochise.az.us)

Cochise County Elections

**Thomas Schelling, Elections Officer**

PO Box 223  
Bisbee, Arizona 85603  
Phone 520/432-9236  
FAX 520/432-9349

Email [tschelling@co.cochise.az.us](mailto:tschelling@co.cochise.az.us)

### COCONINO COUNTY

Coconino County Recorder

**Candace D. "Candy" Owens**

110 East Cherry Avenue  
Flagstaff, Arizona 86001-4696  
PHONE 928/779-6585  
FAX 928/779-6739  
TDD 928/226-6073

Email [cowens@co.coconino.az.us](mailto:cowens@co.coconino.az.us)

Coconino County Elections

**Patty Hansen, Election Administrator**

110 East Cherry Avenue  
Flagstaff, Arizona 86001  
Phone 928/779-6589  
FAX 928/779-6739

Email [phansen@co.coconino.az.us](mailto:phansen@co.coconino.az.us)

### GILA COUNTY

Gila County Recorder

**Linda Haught Ortega**

1400 East Ash Street  
Globe, Arizona 85501-1496  
PHONE 928/425-3231 Ext. 8730  
FAX 928/425-9270  
TDD 928/425-0829

Email [lortega@co.gila.az.us](mailto:lortega@co.gila.az.us)

Gila County Elections

**Dixie Mundy, Director**

1400 East Ash Street  
Globe, Arizona 85501  
Phone 928/425-3231 Ext. 8708  
FAX 928/425-0319

Email [dmundy@co.gila.az.us](mailto:dmundy@co.gila.az.us)

### GRAHAM COUNTY

Graham County Recorder

**Wendy John**

921 Thatcher Blvd.  
Safford, Arizona 85546-2858  
PHONE 928/428-3560  
FAX 928/428-5951  
TDD 928/428-3562

Email [wjohn@graham.az.gov](mailto:wjohn@graham.az.gov)

Graham County Elections

**Judy Dickerson, Elections Officer**

921 Thatcher Blvd  
Safford, Arizona 85546  
Phone 928/428-3250  
FAX 928/428-5951

Email [jdickerson@graham.az.gov](mailto:jdickerson@graham.az.gov)

---

**GREENLEE COUNTY**

Greenlee County Recorder

**Berta Manuz**  
PO Box 1625  
Clifton, Arizona 85533-1625  
PHONE 928/865-2632  
FAX 928/865-4417  
TDD 928/865-2632  
Email [bmanuz@co.greenlee.az.us](mailto:bmanuz@co.greenlee.az.us)

Greenlee County Board of Supervisors

**Yvonne Pearson, Election Director**  
PO Box 908  
Clifton, Arizona 85533  
Phone 928/865-2072  
FAX 928/865-4417  
Email [ypearson@co.greenlee.az.us](mailto:ypearson@co.greenlee.az.us)

**LA PAZ COUNTY**

La Paz County Recorder

**Shelly Baker**  
1112 Joshua Avenue, Suite 201  
Parker, Arizona 85344-5755  
PHONE 928/669-6136  
FAX 928/669-5638  
TDD 928/669-8400  
Email [sbaker@co.la-paz.az.us](mailto:sbaker@co.la-paz.az.us)

La Paz Elections

**Donna J. Hale, Clerk**  
1108 Joshua Avenue  
Parker, Arizona 85344  
Phone 928/669-6115  
FAX 928/669-9709  
Email [dhale@co.la-paz.az.us](mailto:dhale@co.la-paz.az.us)

**MARICOPA COUNTY**

Maricopa County Recorder

**Helen Purcell**  
111 South 3rd Avenue, #103  
Phoenix, Arizona 85003-2225  
PHONE 602/506-1511  
FAX 602/506-3069  
TDD 602/506-2348  
Email [recorder@risc.maricopa.gov](mailto:recorder@risc.maricopa.gov)

Maricopa County Elections

**Karen Osborne, Director**  
111 South 3rd Avenue #102  
Phoenix, Arizona 85003  
Phone 602/506-1511  
FAX 602/506-3069  
Email [elections@risc.maricopa.gov](mailto:elections@risc.maricopa.gov)

**MOHAVE COUNTY**

Mohave County Recorder

**Joan McCall**  
PO Box 70  
Kingman, Arizona 86402-0070  
PHONE 928/753-0701  
FAX 928/753-0727  
TDD 928/753-0769  
Email [joan.mccall@co.mohave.az.us](mailto:joan.mccall@co.mohave.az.us)

Mohave County Elections

**Allen Tempert, Director**  
PO Box 7000  
Kingman, Arizona 86402  
Phone 928/753-0733  
FAX 928/753-2605  
Email [elections@co.mohave.az.us](mailto:elections@co.mohave.az.us)

**NAVAJO COUNTY**

Navajo County Recorder

**Laurette Justman**  
PO Box 668  
Holbrook, Arizona 86025-0668  
PHONE 928/524-4190  
FAX 928/524-4308  
TDD 928/524-4294  
Email [laurie.justman@co.navajo.az.us](mailto:laurie.justman@co.navajo.az.us)

Navajo County Elections

**Kelly Dastrup, Election Coordinator**  
PO Box 668  
Holbrook, Arizona 86025  
Phone 928/524-4062  
FAX 928/524-4048  
Email [kelly.dastrup@co.navajo.az.us](mailto:kelly.dastrup@co.navajo.az.us)

**PIMA COUNTY**

Pima County Recorder

**F. Ann Rodriguez**  
PO Box 3145  
Tucson, Arizona 85702-3145  
PHONE 520/740-4330  
FAX 520/623-1785  
TDD 520/740-4320  
Email [fann@recorder.co.pima.az.us](mailto:fann@recorder.co.pima.az.us)

Pima County Elections

**Brad R. Nelson, Election Director**  
130 West Congress Street, 8th Floor  
Tucson, Arizona 85701  
Phone 520/740-4260  
FAX 520/620-1414  
Email [bnelson@exchange.co.pima.az.us](mailto:bnelson@exchange.co.pima.az.us)

---

## PINAL COUNTY

Pinal County Recorder

**Laura Dean-Lytle**

PO Box 848  
Florence, Arizona 85232-0848  
PHONE 520/866-7100  
FAX 520/866-7170  
TDD 520/866-7166  
Email [Recorder@co.pinal.az.us](mailto:Recorder@co.pinal.az.us)

Pinal County Elections

**Gilberto Hoyos, Director**

PO Box 1592  
Florence, Arizona 85232-1592  
Phone 520/866-6237  
FAX 520/866-6996  
Email [PElections@co.pinal.az.us](mailto:PElections@co.pinal.az.us)

## SANTA CRUZ COUNTY

Santa Cruz County Recorder

**Suzanne "Suzie" Sainz**

2150 North Congress Drive  
Nogales, Arizona 85621-1090  
PHONE 520/375-7990  
FAX 520/761-7938  
TDD 520/761-7816  
Email [ssainz@co.santa-cruz.az.us](mailto:ssainz@co.santa-cruz.az.us)

Santa Cruz County Board of Supervisors

**Melinda Meek, Clerk**

2150 North Congress Drive  
Nogales, Arizona 85621  
Phone 520/375-7808  
FAX 520/761-7843  
Email [mmeek@co.santa-cruz.az.us](mailto:mmeek@co.santa-cruz.az.us)

## YAVAPAI COUNTY

Yavapai County Recorder

**Ana Wayman-Trujillo**

1015 Fair Street, Rm #228  
Prescott, Arizona 86305-1852  
PHONE 928/771-3248  
FAX 928/771-3258  
TDD 928/771-3530  
Email [ana.wayman-trujillo@co.yavapai.az.us](mailto:ana.wayman-trujillo@co.yavapai.az.us)

Yavapai County Elections

**Lynn A. Constabile, Director**

1015 Fair Street, Rm #228  
Prescott, Arizona 86305  
Phone 928/771-3250  
FAX 928/771-3446  
Email [lynn.constabile@co.yavapai.az.us](mailto:lynn.constabile@co.yavapai.az.us)

## YUMA COUNTY

Yuma County Recorder

**Susan Hightower Marler**

410 S. Maiden Lane  
Yuma, AZ 85364-2311  
PHONE 928/373-6020  
FAX 928/373-6024  
TDD 928/373-6033  
Email [susan.marler@co.yuma.az.us](mailto:susan.marler@co.yuma.az.us)

Yuma County Elections

**Patti Madrill, Elections Director**

198 South Main Street  
Yuma, Arizona 85364  
Phone 928/373-1014  
FAX 928/373-1154  
Email [Patti.Madrill@co.yuma.az.us](mailto:Patti.Madrill@co.yuma.az.us)

## IMPORTANT DATES FOR THE 2006 ELECTIONS

### **PRIMARY ELECTION**

September 12, 2006

Registration closes August 14, 2006 at midnight

### **GENERAL ELECTION**

November 7, 2006

Registration closes October 9, 2006 at midnight

### **EARLY VOTING BEGINS**

Primary Election: August 10, 2006

General Election: October 5, 2006

### **PARTISAN CANDIDATE NOMINATION PETITIONS**

*Petition signature requirements will be available after March 1, 2006*

First day to file: May 15, 2006

Last day to file: June 14, 2006 at 5 p.m.

### **"NOMINATION OTHER THAN BY PRIMARY" / "INDEPENDENT"**

First day to file: May 15, 2006

Last day to file: June 14, 2006 at 5 p.m.

### **NEW PARTY PETITIONS**

Number of signatures required: 26,834

Last day to submit to County Recorder for signature verification: March 16, 2006 at 5 p.m.

Last day to file verified petition signatures with Secretary of State: April 25, 2006 at 5 p.m.

### **WRITE-IN CANDIDATES**

Primary Election: Must file not later than August 3, 2006 at 5 p.m.

General Election: Must file not later than September 28, 2006 at 5 p.m.

### **JUSTICES OF THE SUPREME COURT - JUDGES OF THE COURT OF APPEALS FILING**

First day to file for retention: August 9, 2006

Last day to file for retention: September 8, 2006 at 5 p.m.

### **CONSTITUTIONAL & INITIATIVE PETITIONS**

Last day to file petitions: July 6, 2006 at 5 p.m.

Signatures required for: Initiative measures: 122,612—Constitutional Amendments: 183,917

### **REFERENDUM PETITIONS**

Signatures required: 61,306

### **ARGUMENTS FOR OR AGAINST BALLOT MEASURES**

Last day to file: July 14, 2006 at 5 p.m.

### **OFFICIAL CANVASS OF PRIMARY ELECTION**

September 25, 2006

### **OFFICIAL CANVASS OF GENERAL ELECTION**

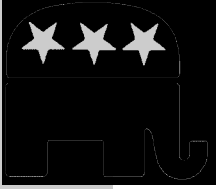
November 27, 2006

## 2005-2006 STATE CAMPAIGN FINANCE REPORTING DATES

Pursuant to A.R.S. § 16-913(B),(C) and 16-916(D)

NAME OF REPORT	TIME PERIOD COVERED IN REPORT	REPORT DUE BETWEEN
January 31 report	Jan 1, 2004 through Dec 31, 2004	Jan 1 to Jan 31, 2005
March Pre-Election report	Jan 1, 2005 through Feb 16, 2005	Feb 17 and Feb 24, 2005
March Post-Election report	Feb 17, 2005 through Mar 28, 2005	March 29 and Apr 7, 2005
May Pre-Election Rpt	Mar 29, 2005 through Apr 27, 2005	April 28 and May 5, 2005
May Post-Election Rpt	April 28, 2005 through June 6, 2005	June 7 and June 16, 2005
Pre-Primary Report	June 7, 2005 through Aug 24, 2005	Aug 25 and Sept 1, 2005
Post-Primary Report	Aug 25, 2005 through Oct 3, 2005	Oct 4 and Oct 13, 2005
Pre-General Report	Oct 4, 2005 through October 19, 2005	Oct 20 and Oct 27, 2005
Post-General Report	Oct 20, 2005 through Nov 28, 2005	Nov 29 and Dec 8, 2005

1. This table does not include additional filing deadlines provided for by the Citizens Clean Election Act. Please see Title 16, Chapter 6, Article 2, available from the Secretary of State's Office and materials provided by the Citizens Clean Election Commission.
2. This table does not include additional filing deadlines in effect for standing political committees as required by A.R.S. §16-931(K). Please visit [www.azsos.gov/cfs/](http://www.azsos.gov/cfs/) or call (602) 542-8683 for specialized table.
3. June 30th period filing removed as per A.R.S. § 16-913 (K)



# Volunteers: *The Backbone of the G.O.P.*

In a campaign, a volunteer is someone who works for a campaign without being paid. A Volunteer is a tremendous asset to a campaign, and their work should be valued.

Most large campaigns in the United States today are dominated by television advertising. For those campaigns, fundraising is the central operation of the campaign.

However, the vast majority of campaigns in America are fundamentally different. In most campaigns, TV is a marginal factor. In those campaigns, word of mouth, neighbor-to-neighbor activity, the smile and the handshake are important. In most campaigns, the central operation should be the recruitment and use of volunteers.

## FINDING VOLUNTEERS

A base of support is one of the key elements of a campaign. Your base of support is the first place you should look for volunteers. Your base includes:

- Your personal friends
- Your church
- Your Christmas card list
- Fellow alumni of your high school or college
- Fellow members of organizations and clubs
- In addition, you should also look for volunteers among:
  - Republican Women's Clubs
  - Other GOP organizations
  - High school government classes

Your campaign plan should be primarily a plan to recruit and use volunteers. When you start recruiting, you need to have several things in mind. Volunteers can be much more than just people who come into the headquarters and lick stamps.

Among the volunteers in your campaign, you need:

- The Campaign Chairman should be the campaign's best-known, best-connected supporter; someone admired in the community for his or her leadership qualities; someone whose phone calls are always returned.
- The Campaign Manager can often be a volunteer. The Campaign Manager is the CEO of your organization, controlling the planning, strategy and timing of your campaign. The Manager sees that the research is done, the schedule is filled, the funds are raised, the mailings go out, and the advertising appears as planned. The Manager sees that the candidate does the candidate's job, too.
- The Research Director is responsible for seeing that the opponent's record and the issues in the community are clearly understood.
- Your Communications Director writes press releases and handles media relations. In many campaigns, this person will also coordinate, or even produce, the advertising.
- Your Scheduler keeps track of, and generates, speaking invitations. Beyond that, he or she may keep track of the areas you have covered and plan to cover door-

Introduction	35
Finding Volunteers	35
Using Volunteers	35
Keeping Volunteers	37

to-door.

- The Yard Sign Chairman supervises distribution of the yard signs.
- A Legal Advisor is assigned to keep the campaign out of trouble.
- The Election Day Chairman sees that the polls are covered with your volunteers on Election Day.
- The Volunteer Chairman or Organizational Director - At a minimum, this job involves bringing people into the headquarters to help out. But the real job is to identify the talents of everyone who wants to help in the campaign and make use of them.
- The Headquarters Chairman sees that the headquarters is a place where volunteers want to work.
- The Headquarters Receptionist - They greet people as they come in, provide volunteers with nametags, visits with them, and gently steers away loafers.
- In addition to one of these jobs - no job is by no means complete - you may have other volunteers in certain categories:
- Headquarters Volunteers - They do clerical work around the headquarters. The headquarters volunteers also read and clip newspaper articles and serve as your letter to the editor committee.
- Telephoners - They call other volunteers to come in; or they call voters for support.
- Precinct Workers - drop off material and talk to their neighbors for you.
- Baby-sitters - watch the children of other volunteers.

There is no substitute for precinct work. Elections are won in the precincts by organization and determination. They are lost by complacency,

political inactivity, and by lack of attention to detail. It is all very well to have an attractive candidate and/or a great issue. But without the precinct workers who deal directly with the individuals who will enter the polling place and make a decision, victories will be few and far between.

The worker who deals directly with his neighbor, is understanding, concerned and dedicated, is ultimately responsible for every political victory!

Of the three ingredients necessary to winning elections (good candidates, funding and organization), effective organization is the most basic to success and is the one, which you, the Precinct Committeeman, can provide. Good candidates are far easier to recruit if they see a sound, functioning organization capable of winning the vote.

"There is no substitute for precinct work. Elections are won in the precincts by organization and determination."

Financial investors always determine the operation before investing. Why do you expect less in politics? Asking people to volunteer is easier when it can be shown that there is a real chance for success and that the money will be well spent.

With these components, you can truly plan for VICTORY CELEBRATION!

### HELPING YOUR VOLUNTEERS

Earlier, we said a volunteer was someone who offered himself of his own free will. Now let's define a volunteer as someone who works for non-monetary rewards. If you keep in mind that your volunteers are working for non-monetary rewards, you must remember to reward them properly.

**Thanks:** Thanks is a neglected form of compensation. The Campaign Manager should make a point of thanking volunteers every day. The candidate should spend a portion of each week calling volunteers and thanking them. Written thank you letters should go out mid-campaign, too. What do you gain by waiting until the end?

**Volunteer of the Week:** Your campaign should have a spot in the headquarters where you put up

---

the photograph of the Volunteer of the Week. A certificate should accompany this award.

**The Refreshment Area:** Make sure the refreshment area has coffee, snacks and soft drinks. If you expect people to work through a mealtime, during some sort of rush project, send out for food.

**Name Tags:** All volunteers should have nametags. Regular volunteers should have permanent nametags. People will be more loyal as they get to know each other. Nametags help them remember each other's names.

**Management Participation:** Management should help on volunteer projects. Your paid staff, if any) needs to pitch in regularly with the volunteers.

**Titles:** Volunteers should receive 'fancy titles and job descriptions to go with them. These titles and job descriptions will make people feel good about themselves. And they should also be designed to impress present or future employers with the skills and talents shown during the campaign.

You will also want to follow these rules for treating volunteers properly:

- Always have work for them to do. Never get in a situation where you tell volunteers there's nothing to do today.
- Have precise job descriptions. It probably doesn't matter strategically whether you have your yard sign blitz on October 8th or October 15th. But it does matter to your Yard Sign chairman, because that's the day he needs to plan for. Have key dates scheduled in your campaign; you want to tell people exactly what's expected of them.
- Recruit Specifically. Do NOT say, "come in to headquarters when you have a chance." Instead ask, "which evenings are you free? Can you come in Tuesday for two hours from 6:00 to 8:00?" People tend to do what's

expected of them.

- Build success and celebration into assignments. Don't let your volunteers get discouraged or exhausted. Break big projects into stages and mark the completion of each stage with a celebration of success.
- Go back for your stragglers. People tend to do what they're expected to do. If you expect that your volunteers won't show up as promised, they won't. But, if you notice it when they are missing if you call them and express your concern, they'll be much more likely to be punctual next time.
- Spend time on training. Each time you start a new project, get people together and talk about what you are trying to do. Training is fun and motivating.
- Encourage questions. Establish an atmosphere where your volunteers feel free to ask about things that they don't understand and to question things that don't make sense. Spending time explaining things again is much better than having to do them over after they've been done wrong. Also, your volunteers will often suggest better ways to get something done if you give them a chance.

Of course the candidate is a volunteer. A candidate who acts as the first of the volunteers (rather than the boss of the paid staff) will have more volunteers.



**2005-2006 ELECTION CYCLE**

**CAMPAIGN CONTRIBUTION LIMITS**

CONTRIBUTION LIMITS ADJUSTED JANUARY 31, 2005, PURSUANT TO A.R.S. § 16-905(J)

CAMPAIGN CONTRIBUTION LIMITS	NON-STATEWIDE OFFICES Candidate or Authorized Candidate's Committee		STATEWIDE OFFICES Candidate or Authorized Candidate's Committee
	LOCAL	LEGISLATIVE	
<b>Individual's</b> contribution to a candidate A.R.S. §16-905(A)(1) A.R.S. §16-905(B)(1)	\$370	\$296	\$760
<b>Political Committee's</b> contribution to a candidate A.R.S. §16-905(A)(2) A.R.S. §16-905(B)(2)	\$370	\$296	\$760
<b>Committees certified</b> by the Secretary of State to give at the upper limit <b>"Super PAC"</b> A.R.S. §16-905(I) A.R.S. §16-905(A)(3) A.R.S. §16-905(B)(3)	\$1,890	\$1,512	\$3,784
<b>Combined total</b> from all Political Committees other than political parties A.R.S. §16-905(C)	\$9,460	\$7,568	\$75,624
<b>Nominee's total</b> from political party and all political organizations combined A.R.S. §16-905(D)	\$9,460	\$7,568	\$75,624
<b>Total contributed by an individual</b> to candidates and committees who give to candidates A.R.S. §16-905(E)	\$3,530 in a calendar year		

NOTIFICATION LEVELS FOR CANDIDATES' AND DESIGNATING INDIVIDUALS' PERSONAL MONIES

PERSONAL MONIES NOTIFICATION A.R.S. § 16905(F)&(G)	NON-STATEWIDE OFFICES Candidate or Authorized Candidate's Committee		STATEWIDE OFFICES Candidate or Authorized Candidate's Committee	
	Candidate	Exploratory	Candidate	Exploratory
Candidates' and Designating Individuals' obligated or contributed personal monies: <b>first notification</b> A.R.S. §16-905(F)&(G)	\$14,800	\$14,800	\$29,580	\$29,580
Candidates' and Designating Individuals' obligated or contributed personal monies: <b>subsequent notification</b> A.R.S. §16-905(F)&(G)	\$7,410	\$7,490	\$14,800	\$15,060

## FEDERAL ELECTED OFFICIALS

### U.S. SENATE

#### John McCain

<http://mccain.senate.gov/>

241 Russell Senate O.B.  
Washington D.C., 20510  
(202) 224-2235  
(202) 224-2862 Fax

5353 N. 16<sup>th</sup> St. Suite 105  
Phoenix, AZ 85016  
(602) 952-2410  
(602)952-8702 Fax

407 W. Congress St. #103  
Tucson, AZ 85701  
(520) 970-6334  
(520) 670-6637

#### JON KYL

<http://kyl.senate.gov/>

730 Hart Senate OB  
Washington D.C. 20510  
(202) 224-4521  
(202) 224-2207 Fax

2200 E. Camelback Rd #120  
Phoenix, AZ 85016  
(602) 840-1891  
(602) 957-6838 Fax

7315 N. Oricle Rd. #220  
Tucson, AZ 85704  
(520) 575-8633  
(520) 797-3232 Fax

### U. S. REPRESENTATIVES

#### CD 1 RICK RENZI

418 Cannon HOB  
Washington D.C. 20515  
(202) 225-2315  
(202) 226-9439 Fax

2501 N. 4th Street Suite 23  
Flagstaff, AZ 86004  
(928) 213-3434  
(928) 213-5447 Fax

Campaign Office  
PO Box 2383  
Prescott, AZ 86302  
(928) 777-8171  
(928) 777-8787 fax

#### CD 2 TRENT FRANKS

237 Longworth HOB  
Washington D.C. 20515  
(202) 225-4576  
(202) 225-6328 Fax

7121 W. Bell Road #200  
Glendale, AZ 85308  
(623) 776-7911  
(623) 776-7832 Fax

Campaign Office  
12416 North 57th Drive  
Glendale, AZ 85304  
(623) 979-1776

#### CD 3 JOHN SHADEGG

306 Cannon HOB  
Washington D.C. 20151  
(202) 225-3361  
(202) 225-3462 Fax

301 Bethany Home Rd. C 178  
Phoenix, AZ 85012  
(602) 263-5300  
(602) 248-7733 Fax

PO Box 45444  
Phoenix, AZ 85064  
(602) 235-9704

#### CD 4 ED PASTOR (D)

2465 Rayburn House Office Bldg.  
Washington, D.C. 20515-0304  
202-225-4065  
202-225-1655 FAX

#### CD 5 J.D. HAYWORTH

2434 Rayburn HOB  
Washington DC 20515  
(202) 225-2190  
(202) 226-4386 Fax

14300 N. Nightsight Blvd #101  
Scottsdale, AZ 85260  
(480) 926-4151  
(480) 926-3998 Fax

Campaign Office  
14300 N. Northsight Blvd. #105  
Scottsdale, AZ 85260  
(480) 614-1159  
(480) 614-1162 fax

#### CD 6 JEFF FLAKE

424 Cannon HOB  
Washington, D.C. 20515  
(202) 225-2635  
(202) 226-4386 Fax

1640 S. Stapely #215  
Mesa, AZ 85204  
(480) 833-0092  
(480) 833-6314 Fax

Campaign Office  
P.O. Box 21447  
Mesa, AZ 85277  
(480) 503-9216  
(480) 813-3449 Fax

#### CD 7 RAUL GRIJALVA (D)

1440 Longworth House Office  
Washington, D.C. 20515-0307  
202-225-2435

#### CD 8 JIM KOLBE

2266 Cannon HOB  
Washington DC 20515  
(202) 225-2542  
(202) 225-0378 Fax

1661 N. Swan Rd #112  
Tucson, AZ 85712  
(520) 881-3588  
(520) 322-9490 Fax

Campaign Office  
P.O. Box 31568  
Tucson, AZ 85751  
(520) 909-8629

ARIZONA STATE SENATE

Senate Wing, State Capitol, Phoenix 85007

(602)542-3559 (602) 542-3429 FAX

Name	District	Party	Email	Phone (602)
Ken Bennett (President)	1	R	kbennett@azleg.state.az.us	926-5584
Albert Hale	2	D	ahale@azleg.state.az.us	926-4323
Ron Gould	3	R	rgould@azleg.state.az.us	926-4138
Jack W. Harper	4	R	jharper@azleg.state.az.us	926-4178
Jake Flake	5	R	jflake@azleg.state.az.us	926-5219
Dean Martin	6	R	dmartin@azleg.state.az.us	926-5284
Jim Waring	7	R	jwaring@azleg.state.az.us	926-4916
Carolyn S. Allen	8	R	callen@azleg.state.az.us	926-4480
Robert "Bob" Burns	9	R	rburns@azleg.state.az.us	926-5993
Linda Gray	10	R	lgray@azleg.state.az.us	926-3376
Barbara Leff	11	R	bleff@azleg.state.az.us	926-4486
Robert Blendu	12	R	rblendu@azleg.state.az.us	926-5955
Richard Miranda (Minority Whip)	13	D	rmiranda@azleg.state.az.us	926-5911
Bill Brotherton	14	D	bbrother@azleg.state.az.us	926-4485
Ken Chevront	15	D	kchevront@azleg.state.az.us	926-5325
Linda Aguirre (Minority Leader)	16	D	laguirre@azleg.state.az.us	926-3830
Harry E. Mitchell (Assistant Minority Leader)	17	D	hmitchel@azleg.state.az.us	926-4124
Karen Johnson	18	R	kjohnson@azleg.state.az.us	926-3160
Marilyn Jarrett	19	R	mjarrett@azleg.state.az.us	926-5288
John Huppenthal	20	R	jhuppent@azleg.state.az.us	926-5261
Jay Tibshraeny (Majority Whip)	21	R	jtibshra@azleg.state.az.us	926-4481
Thayer Verschoor	22	R	tverscho@azleg.state.az.us	926-4136
Rebecca Rios	23	D	rrios@azleg.state.az.us	926-5685
Robert Cannell	24	D	rcannell@azleg.state.az.us	926-4139
Marsha Arzberger	25	D	marzberg@azleg.state.az.us	926-4321
Toni Hellon	26	R	thellon@azleg.state.az.us	926-4326
Jorge Luis Garcia	27	D	jgarcia@azleg.state.az.us	926-4171
Gabrielle Giffords	28	D	ggifford@azleg.state.az.us	926-5262
Victor Soltero	29	D	vsoltero@azleg.state.az.us	926-5342
Timothy S. Bee (Majority Leader)	30	R	tbee@azleg.state.az.us	926-5683

## ARIZONA HOUSE OF REPRESENTATIVES

House Wing, State Capitol, Phoenix 85007

(602)542-4221 (602)542-4511 FAX

Name	District	Party	Email	Phone (602)
Lucy Mason	1	R	lmason@azleg.state.az.us	926-5874
Tom O'Halleran	1	R	tohaller@azleg.state.az.us	926-4079
Albert Tom	2	D	atom@azleg.state.az.us	926-5862
Ann Kirkpatrick	2	D	akirkpat@azleg.state.az.us	926-5160
Trish Groe	3	R	tgroe@azleg.state.az.us	926-5408
Nancy G. McLain	3	R	nmclain@azleg.state.az.us	926-5051
Tom Boone	4	R	tboone@azleg.state.az.us	926-3297
Judy Burges	4	R	jburges@azleg.state.az.us	926-5861
Jack A. Brown	5	D	jbrown@azleg.state.az.us	926-4129
Bill Konopnicki	5	R	bkonopni@azleg.state.az.us	926-5409
Pamela Gorman	6	R	pgorman@azleg.state.az.us	926-4002
Ted Carpenter	6	R	tcarpent@azleg.state.az.us	926-5333
Ray Barnes	7	R	rbarnes@azleg.state.az.us	926-5503
David Burnell Smith	7	R	dsmith@azleg.state.az.us	926-5766
Michele Reagan	8	R	mreagan@azleg.state.az.us	926-5828
Colette Rosati	8	R	crosti@azleg.state.az.us	926-5169
Rick Murphy	9	R	rmurphy@azleg.state.az.us	926-3255
Bob Stump	9	R	bstump@azleg.state.az.us	926-5413
James P. Weiers (Speaker of the House)	10	R	jweiers@azleg.state.az.us	926-4173
Doug Quellan	10	R	dquellan@azleg.state.az.us	926-4639
Stephen Tully (Majority Leader)	11	R	stully@azleg.state.az.us	926-5977
John M. Allen	11	R	jallen@azleg.state.az.us	926-3395
Jerry P. Weiers	12	R	jpweiers@azleg.state.az.us	926-5894
John B. Nelson	12	R	jnelson@azleg.state.az.us	926-5872
Steve Gallardo	13	D	sgallard@azleg.state.az.us	926-3392
Martha Garcia	13	D	mgarcia@azleg.state.az.us	926-5830
Robert Meza	14	D	rmeza@azleg.state.az.us	926-3425
Debbie McCune Davis	14	D	ddavis@azleg.state.az.us	926-5412
Kyrsten Sinema	15	D	ksinema@azleg.state.az.us	926-5058
David M. Lujan	15	D	dlujan@azleg.state.az.us	926-5829
Leah Landrum Taylor	16	D	llandrum@azleg.state.az.us	926-5864

CONTINUED ON NEXT PAGE

## ARIZONA HOUSE OF REPRESENTATIVES

House Wing, State Capitol, Phoenix 85007

(602)542-4221 (602)542-4511 FAX

Name	District	Party	Email	Phone (602)
Ben R. Miranda	16	D	bmiranda@azleg.state.az.us	926-4893
Laura Knaperek	17	R	lknapere@azleg.state.az.us	926-4225
Meg Burton Cahill	17	D	mbcahill@azleg.state.az.us	926-5896
Mark Anderson	18	R	manderso@azleg.state.az.us	926-4467
Russell K. Pearce	18	R	rpearce@azleg.state.az.us	926-5760
Gary L. Pierce (Majority Whip)	19	R	gpierce@azleg.state.az.us	926-3163
Chuck Gray	19	R	cdgray@azleg.state.az.us	926-5495
Bob Robson	20	R	brobson@azleg.state.az.us	926-5549
John McComish	20	R	jmccomis@azleg.state.az.us	926-5898
Warde Nichols	21	R	wnichols@azleg.state.az.us	926-5168
Steven B. Yarbrough	21	R	syarbrou@azleg.state.az.us	926-5863
Andy Biggs	22	R	abiggs@azleg.state.az.us	926-4371
Eddie Farnsworth	22	R	efarnsw@azleg.state.az.us	926-5735
Cheryl Chase	23	D	cchase@azleg.state.az.us	926-5030
Pete Rios (Minority Whip)	23	D	prios@azleg.state.az.us	926-5761
Amanda Aguirre	24	D	aaguirre@azleg.state.az.us	926-4430
Russell L. Jones	24	R	rjones@azleg.state.az.us	926-5273
Manuel V. "Manny" Alvarez	25	D	malvarez@azleg.state.az.us	926-5895
Jennifer J. Burns	25	R	jburns@azleg.state.az.us	926-5836
Pete Hershberger	26	R	phershbe@azleg.state.az.us	926-5839
Steve Huffman	26	R	shuffman@azleg.state.az.us	926-3394
Phil Lopes (Minority Leader)	27	D	plopes@azleg.state.az.us	926-3278
Olivia Cajero Bedford	27	D	ocajerob@azleg.state.az.us	926-5835
Ted Downing	28	D	tdowning@azleg.state.az.us	926-5108
David T. Bradley	28	D	dbradley@azleg.state.az.us	926-3300
Linda Lopez (Assistant Minority Leader)	29	D	llopez@azleg.state.az.us	926-4089
Tom Prezelski	29	D	tprezels@azleg.state.az.us	926-3424
Jonathan Paton	30	R	jpaton@azleg.state.az.us	926-3235
Marian A. McClure	30	R	mmclure@azleg.state.az.us	926-3312

**ARIZONA STATE OFFICIALS**

State Capitol  
1700 W Washington  
Phoenix, AZ 85007

**GOVERNOR**

**Janet Napolitano (D)**

(602)542-4331  
(602)542-1381 FAX  
www.governor.state.az.us

**SECRETARY OF STATE**

**Jan Brewer (R)**

(602)542-4285  
(602)542-1575 FAX  
www.azsos.gov

**ATTORNEY GENERAL**

**Terry Goddard (D)**

(602)542-5025  
(602)542-4085 FAX  
www.ag.state.az.us

**SUPERINTENDENT OF PUBLIC INSTRUCTION**

**Tom Horne (R)**

(602)542-5393  
(602)542-5440 FAX  
www.ade.state.az.us

**TREASURER**

**David Petersen (R)**

(602)604-7800  
www.aztreasury.gov

**MINE INSPECTOR'S OFFICE**

**Doug K. Martin**

(602)542-5971  
(602)542-5335 FAX  
www.asmi.state.az.us

**ARIZONA CORPORATION COMMISSION**

1200 W Washington  
Phoenix, AZ 85007  
www.cc.state.az.us

**Jeff Hatch-Miller ( R ) , Chairman**

(602) 542-3625

**Bill Mundell ( R )      Marc Spitzer ( R )**

(602) 542-3935                      (602) 542-3933

**Kris Mayes ( R )      Mike Gleason ( R )**

(602) 542-4143                      (602) 542-3682

**RNC CONTACT INFORMATION**

**Office of the Chairman**

Ken Mehlman, Chairman  
Phone: 202/863-8700  
Fax: 202/863-8774  
Email: ChairmansOffice@rnc.org

JoAnn Davidson, OH, Co-Chairman  
Phone: 202-863-8545  
Fax: 202-863-8631

**Administration**

Human Resources  
Constituent Services  
Phone: 202-863-8560  
Fax: 202-863-8609  
Email: Administration@rnc.org

**Communications**

Press, Media, Television, Radio  
Phone: 202-863-8550  
Fax: 202-863-8609  
Email: Communications@rnc.org

**Legal Counsel**

Redistricting  
Phone: 202/863-8638  
Fax: 202-863-8654  
Counsel@rnc.org

**Member Relations**

Winter Meeting  
Summer Meeting  
Phone: 202-863-8630  
Fax: 202-863-8835  
Email: MemberRelations@rnc.org  
Finance

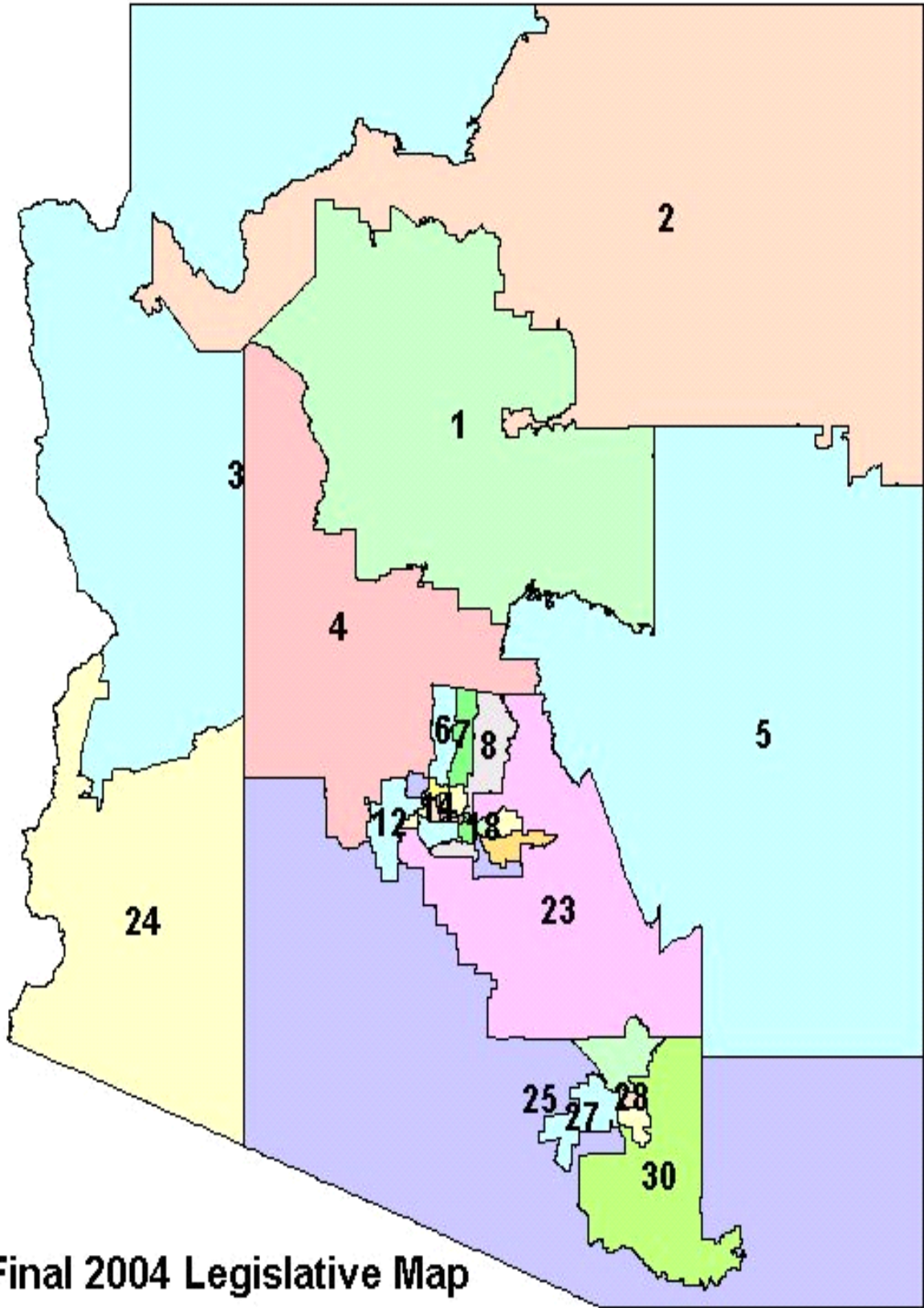
Marketing  
Donor Programs  
Phone: 202-863-8720  
Fax: 202-863-8657  
Finance@rnc.org

**Political, Governmental Affairs/Research**

Campaign Operations  
Voter Programs  
Phone: 202-863-8600  
Fax: 202-863-8657  
Political@rnc.org

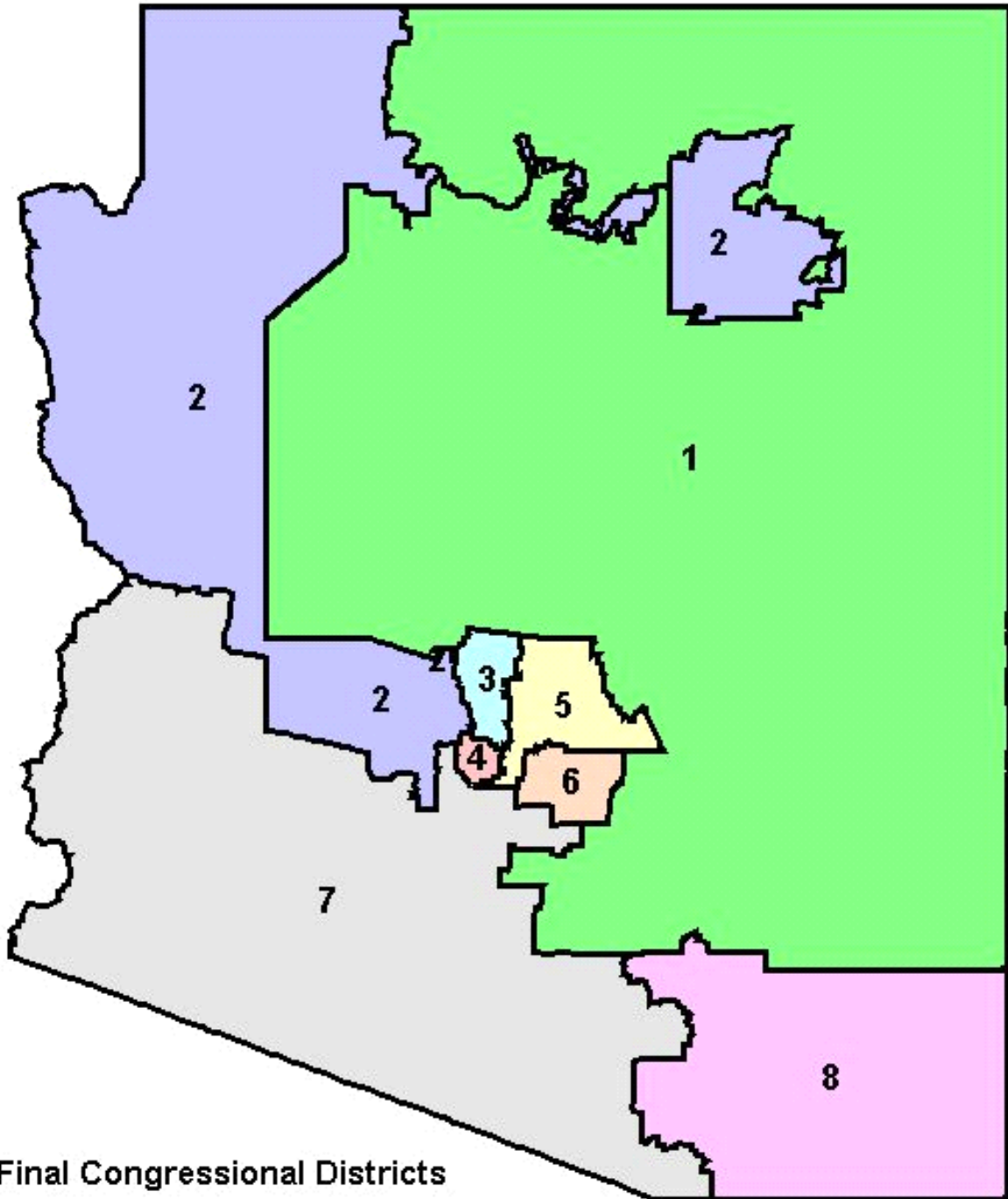
**Network & Online Services**

Network Services, Online Services  
Political Analysis  
Phone: 202-863-8670  
Fax: 202-863-8851  
Email NOS@rnc.org



**Final 2004 Legislative Map**

Map from [WWW.AZREDISTRICTING.ORG](http://WWW.AZREDISTRICTING.ORG)



Map from [WWW.AZREDISTRICTING](http://WWW.AZREDISTRICTING).

Arizona Political Maps are also available from Capitol Times at Box 2260, Phoenix, AZ 85002

16-101. Qualifications of registrant; definition

A. Every resident of the state is qualified to register to vote if he:

1. Is a citizen of the United States.
2. Will be eighteen years of age or more on or before the date of the regular general election next following his registration.
3. Will have been a resident of the state twenty-nine days next preceding the election, except as provided in section 16-126.
4. Is able to write his name or make his mark, unless prevented from so doing by physical disability.
5. Has not been convicted of treason or a felony, unless restored to civil rights.
6. Has not been adjudicated an incapacitated person as defined in section 14-5101.

B. For purposes of this title, "resident" means an individual who has actual physical presence in this state, or for purposes of a political subdivision actual physical presence in the political subdivision, combined with an intent to remain. A temporary absence does not result in a loss of residence if the individual has an intent to return following his absence. An individual has only one residence for purposes of this title.

16-120. Eligibility to vote

No elector shall vote in an election called pursuant to the laws of this state unless the elector has been registered to vote as a resident within the boundaries or the proposed boundaries of the election district for which the election is being conducted and the registration has been received by the county recorder or his designee pursuant to section 16-134 prior to midnight of the twenty-ninth day preceding the date of the election.

16-201. Primary elections

On the eighth Tuesday prior to a general or special election at which candidates for public office are to be elected, a primary election shall be held.

16-202. Notice of offices for which candidates are to be nominated at primary

At least one hundred twenty days before the date of a regular primary election, the secretary of state shall prepare and transmit to the board of supervisors of each county a notice in writing designating the state and federal offices for which candidates are to be nominated at the primary election

16-203. Primary election for nomination of candidates in municipalities

A primary election for nominations of candidates entitling the nominated candidates to have their names printed on the official ballots at municipal elections in incorporated cities and towns shall be held not less than thirty days prior to the elections.

16-204. Declaration of statewide concern; consolidated election dates

A. While the legislature recognizes that the method of conducting elections by political subdivisions including charter counties and cities may be a matter of local concern, the legislature finds and determines that for the purposes of increasing voter participation and for decreasing the costs to the taxpayers it is a matter of statewide concern that all elections in this state be conducted on a limited number of days and, therefore, the legislature finds and declares that the holding of all elections on certain specific consolidated days is a matter of statewide concern.

B. Notwithstanding any other law or any charter or ordinance of any county, city or town to the contrary, an election held for or on behalf of a county, city or town, a school district, a community college district or special districts organized pursuant to title 48, chapters 5, 6, 8, 10, 13 through 16 and 33 may only be held on the following dates:

1. The second Tuesday in March.
2. The third Tuesday in May.
3. The eighth Tuesday before the first Tuesday after the first Monday in November.
4. The first Tuesday after the first Monday in November.

C. This section does not apply to an election regarding a county or city charter committee or county or city charter proposal that is conducted pursuant to article XIII, section 2 or 3 or article XII, section 5, Constitution of Arizona.

16-205. Election dates; notice; administration

A. At least one hundred eighty days before each consolidated election date prescribed by section 16-204, each county board of supervisors shall give notice in writing regarding the consolidated election program to each school district, community college district, city, town and special taxing district organized pursuant to title 48, chapters 5, 6, 8, 10 and 13 through 16 in that county. The notice shall state the date of the election.

B. The board of supervisors may hold elections only on the dates prescribed by section 16-204.

C. The secretary of state shall coordinate the consolidated elections with the board of supervisors. The board of supervisors may enter into an intergovernmental agreement pursuant to title 11, chapter 7, article 3 with each political subdivision that participates in a consolidated election in that county in order to administer those elections. After consultation with the political subdivisions that are participating in a consolidated election, the officer in charge of elections shall administer the appointment of election boards.

D. Within ninety days of a consolidated election conducted pursuant to this section, the board of supervisors shall prepare a report that provides an itemized account of all costs incurred by the county in administering the election, including an itemized account of all charges made to each political subdivision that participated in that election. Political subdivisions that participated in an election conducted pursuant to this section may request and receive a copy of this report from the board.

16-211. General election

On the first Tuesday after the first Monday in November of every even-numbered year, a general election shall be held for the election of representatives in Congress, members of the legislature, and state, county and precinct officers whose terms expire at the end of the year in which the election is being held or in the following year.

16-212. Election of presidential electors

On the first Tuesday after the first Monday in November, 1956, and quadrennially thereafter, there shall be elected a number of presidential electors equal to the number of United States senators and representatives in Congress from this state.

16-213. Election of United States senator

There shall be at each general election immediately preceding the expiration of the term of office of a United States senator from this state, an election of a United States senator.

16-214. Issuance of proclamation for general election by governor; publication by boards of supervisors

A. At least thirty days before a general election, the governor shall issue a proclamation containing a statement of the time of election and the offices to be filled.

B. The governor shall transmit a copy of the election proclamation to the officer in charge of elections of the several counties.

C. The board of supervisors shall be notified by the officer in charge of elections of receipt of the election proclamation, and within five days after its receipt the board shall meet and publish a copy thereof in an official newspaper of the county at least ten days before a general election.

16-301. Nomination of candidates for printing on official ballot of general or special election

At a primary election, each political party entitled and intending to make nominations for the ensuing general or special election shall, if it desires to have the names of its candidates printed on the official ballot at such general or special election, nominate its candidates for all elective, senatorial, congressional, state, judicial, county and precinct offices to be filled at such election except as provided in section 16-344.

16-302. Failure to nominate candidate in primary election

If no candidate is nominated in the primary election for a particular office, then no candidate for that office for that party may appear on the general or special

## EXCERPTS FROM ARIZONA REVISED STATUTES, TITLE 16 ELECTIONS AND ELECTORS

election ballot except as provided in section 16-344.

### 16-311. Nomination papers; filing; definitions

A. Any person desiring to become a candidate at a primary election for a political party and to have the person's name printed on the official ballot shall be a qualified elector of such party and shall, not less than ninety nor more than one hundred twenty days before the primary election, sign and cause to be filed a nomination paper giving the person's place of residence and post office address, naming the party of which the person desires to become a candidate, stating the office and district or precinct, if any, for which the person offers the person's candidacy, stating the exact manner in which the person desires to have the person's name printed on the official ballot pursuant to subsection G, and giving the date of the primary election and, if nominated, the date of the general election at which the person desires to become a candidate. A candidate for public office shall be a qualified elector at the time of filing and shall reside in the county, district or precinct which the person proposes to represent.

B. Any person desiring to become a candidate at any nonpartisan election and to have the person's name printed on the official ballot shall be at the time of filing a qualified elector of such county, city, town or district and, not less than ninety nor more than one hundred twenty days before the election, shall sign and cause to be filed a nomination paper giving the person's place of residence and post office address, stating the office and county, city, town or district and ward or precinct, if any, for which the person offers the person's candidacy, stating the exact manner in which the person desires to have the person's name printed on the official ballot pursuant to subsection G and giving the date of the election. A candidate for office shall reside at the time of filing in the county, city, town, district, ward or precinct which the person proposes to represent.

C. Notwithstanding the provisions of subsection B to the contrary, any city or town may adopt by ordinance for its elections the time frame provided in subsection A for filing nomination petitions. Such ordinance shall be adopted not less than one hundred twenty days before the first election to which it applies.

D. All persons desiring to become a candidate shall file with the nomination paper provided for in subsection A an affidavit which shall be printed in a form prescribed by the secretary of state. The affidavit shall include facts sufficient to show that, other than the residency requirement provided in subsection A, the candidate will be qualified at the time of election to hold the office the person seeks.

E. The nomination paper of a candidate for the office of United States senator or representative in Congress, for the office of presidential elector or for a state office, including a member of the legislature, or for any other office for which the electors of the entire state or a subdivision of the state greater than a county are entitled to vote, shall be filed with the secretary of state no later than 5:00 p.m. on the last date for filing.

F. The nomination paper of a candidate for superior court judge or for a county, district and precinct office for which the electors of a county or a subdivision of a county other than an incorporated city or town are entitled to vote shall be filed with the county elections officer no later than 5:00 p.m. on the last date for filing as prescribed by subsection A. The nomination paper of a candidate for a city or town office shall be filed with the city or town clerk no later than 5:00 p.m. on the last date for filing. The nomination paper of a candidate for school district office shall be filed with the county school superintendent no later than 5:00 p.m. on the last date for filing.

G. The nomination paper shall include the exact manner in which the candidate desires to have the person's name printed on the official ballot and shall be limited to the candidate's surname and given name or names, an abbreviated version of such names or appropriate initials such as "Bob" for "Robert", "Jim" for "James", "Wm." for "William" or "S." for "Samuel". Nicknames are permissible, but in no event shall nicknames, abbreviated versions or initials of given names suggest reference to professional, fraternal, religious or military titles. No other descriptive name or names shall be printed on the official ballot, except as provided in this section. Candidates' abbreviated names or nicknames may be printed within quotation marks. The candidate's surname shall be printed first, followed by the given name or names.

H. A person who does not file a timely nomination paper that complies with this section is not eligible to have the person's name printed on the official ballot for that office. The filing officer shall not accept the nomination paper of a candidate for state or local office unless it is accompanied by all of the

following:

1. The nomination petition required by this title.
  2. A political committee statement of organization or the five hundred dollar threshold exemption statement.
  3. The financial disclosure statement as prescribed for candidates for that office.
- I. As used in this title:
1. "Election district" means the state, any county, city, town, precinct or other political subdivision or a special district which is not a political subdivision, which is authorized by statute to conduct an election and which is authorized or required to conduct its election in accordance with this title.
  2. "Nomination paper" means the form filed with the appropriate office by a person wishing to declare the person's intent to become a candidate for a particular political office.

### 16-312. Filing of nomination papers for write-in candidates

A. Any person desiring to become a write-in candidate for an elective office in any election shall file a nomination paper, signed by the candidate, giving the person's place of residence and post office address, age, length of residence in the state and date of birth.

B. A write-in candidate shall file the nomination paper no later than 5:00 p.m. on the fourteenth day prior to the election. The write-in filing procedure shall be in the same manner as prescribed in section 16-311. Any person who does not file a timely nomination paper shall not be counted in the tally of ballots. The filing officer shall not accept the nomination paper of a candidate for state or local office unless it is accompanied by both of the following:

1. A political committee statement of organization or the five hundred dollar threshold exemption statement.
2. The financial disclosure statement as prescribed for candidates for that office.

C. The secretary of state shall notify the various boards of supervisors as to write-in candidates filing with the secretary of state's office. The county school superintendent shall notify the appropriate board of supervisors as to write-in candidates filing with the superintendent's office. The board of supervisors shall notify the appropriate election board inspector of all candidates who have properly filed such statements. In the case of a city or town election, the city or town clerk shall notify the appropriate election board inspector of candidates properly filed. No other write-ins shall be counted. The election board inspector shall post the notice of official write-in candidates in a conspicuous location within the polling place.

D. Except as provided in section 16-343, subsection E, a candidate may not file pursuant to this section if either of the following applies:

1. The candidate ran in the immediately preceding primary election and failed to be nominated to the office sought in the current election.
2. The candidate filed a nomination petition for the immediately preceding primary election for the office sought and failed to provide a sufficient number of valid petition signatures as prescribed by section 16-322.

E. A person who files a nomination paper pursuant to this section for the office of president of the United States shall designate in writing to the secretary of state at the time of filing the name of the candidate's vice-presidential running mate, the names of presidential electors who will represent that candidate and a statement signed by the vice-presidential running mate and designated presidential electors that indicates their consent to be designated. A nomination paper for each presidential elector designated shall be filed with the candidate's nomination paper. The number of presidential electors shall equal the number of United States senators and representatives in Congress from this state.

### 16-313. Filing of nomination paper and petitions for special primary election

In a special primary election called by proclamation, nominating papers may be filed not less than sixty days before the date fixed by the proclamation for the special primary election. Nomination petitions shall be filed no later than sixty days before the special primary election and signed by qualified electors as provided in section 16-322.

### 16-314. Filing and form of nomination petitions; definition

A. Any person desiring to become a candidate at any election and to have the person's name printed on the official ballot shall, within the same time and with the same officer as provided by section 16-311, file a nomination petition in addition to the nomination paper required.

B. As used in this title, "nomination petition" means the form or forms used for obtaining the required number of signatures of qualified electors, which is circulated by or on behalf of the person wishing to become a candidate for a political office.

C. Nomination petitions shall be captioned "partisan nomination petition" or "nonpartisan nomination petition", followed by the language of the petition in substantially the following form:

**Partisan Nomination Petition**

"I, the undersigned, a qualified elector of the county of \_\_\_\_\_, state of Arizona, and of (here name political division or district from which the nomination is sought) and a member of the \_\_\_\_\_ party or a person who is registered as no party preference or independent as the party preference or who is registered with a political party that is not qualified for representation on the ballot, hereby nominate \_\_\_\_\_ who resides at \_\_\_\_\_ in the county of \_\_\_\_\_ for the party nomination for the office of \_\_\_\_\_ to be voted at the primary election to be held \_\_\_\_\_ as representing the principles of such party, and I hereby declare that I am qualified to vote for this office and that I have not signed, and will not sign, any nomination petition for more persons than the number of candidates necessary to fill such office at the next ensuing election."

**Nonpartisan Nomination Petition**

"I, the undersigned, a qualified elector of the county of \_\_\_\_\_, state of Arizona, and of (here name political division or district from which the nomination is sought) hereby nominate \_\_\_\_\_ who resides at \_\_\_\_\_ in the county of \_\_\_\_\_ for the office of \_\_\_\_\_ to be voted at the \_\_\_\_\_ election to be held \_\_\_\_\_, and hereby declare that I am qualified to vote for this office and that I have not signed and will not sign any nomination petitions for more persons than the number of candidates necessary to fill such office at the next ensuing election."

D. The nomination petition of a person seeking to fill an unexpired vacant term for any public office shall designate the expiration date of the term following the name of the office being sought.

**16-315. Form of petitions**

A. The nomination petitions shall be in substantially the following form:

1. Petitions shall be on paper fourteen inches wide and eight and one-half inches long.
2. Petitions shall be headed by a caption stating the purpose of the petition, followed by the body of the petition stating the intent of the petitioners.
3. There shall be fifteen lines spaced three-eighths of an inch apart and consecutively numbered one through fifteen.
4. The signature portion of the petition shall be divided into columns headed by the titles: signature; printed name; residence or mailing address or, if no street address, a description of residence location, city, town or post office; and date of signing.
5. A photograph of the candidate may appear on the nomination petition.

B. The following shall appear on the petition:

**Instructions for Circulators**

1. All petitions shall be signed by circulator.
2. Circulator must be qualified to register to vote in this state.
3. Circulator's name shall be typed or printed under such person's signature.
4. Circulator's residence address or, if no street address, a description of residence location shall be included on the petition.

C. The secretary of state shall prepare sample nomination petition forms and distribute such forms to all election officers.

**16-321. Signing and certification of nomination petition**

A. Each signer of a nomination petition shall sign only one petition for the same office unless more than one candidate is to be elected to such office, and in that case not more than the number of nomination petitions equal to the number of candidates to be elected to the office. A signature shall not be counted on a nomination petition unless the signature is upon a sheet bearing the form prescribed by section 16-314.

B. If an elector signs more nomination petitions than permitted by subsection A of this section, the earlier signatures of the elector are deemed valid, as determined by the date of the signature as shown on the petitions. If the signatures by the elector are dated on the same day, all signatures by that elector on that day are deemed invalid. Any signature by that elector on a nomination petition on or after the date of the last otherwise valid signature is deemed invalid and shall not be counted.

C. The person before whom the signatures were written on the signature sheet shall be qualified to register to vote in this state pursuant to section 16-101 and shall verify that each of the names on the petition was signed in his presence on the date indicated, and that in his belief each signer was a qualified elector who resides at the address given as the signer's residence on the date indicated and, if for a partisan election, that each signer is a member of the party the nomination of which the candidate whose name appears on the nomination petition is seeking. The way the name appears on the petition shall be the name used in determining the validity of the name for any legal purpose pursuant to the election laws of this state. Signature and handwriting comparisons may be made.

**16-322. Number of signatures required on nomination petitions**

A. Nomination petitions shall be signed:

1. If for a candidate for the office of United States senator or for a state office, excepting members of the legislature and superior court judges, by a number of qualified electors who are qualified to vote for the candidate whose nomination petition they are signing equal to at least one-half of one per cent of the voter registration of the party of the candidate in at least three counties in the state, but not less than one-half of one per cent nor more than ten per cent of the total voter registration of his party in the state.
2. If for a candidate for the office of representative in Congress, by a number of qualified electors who are qualified to vote for the candidate whose nomination petition they are signing equal to at least one-half of one per cent but not more than ten per cent of the total voter registration of the party designated in the district from which such representative shall be elected.
3. If for a candidate for the office of member of the legislature, by a number of qualified electors who are qualified to vote for the candidate whose nomination petition they are signing equal to at least one per cent but not more than three per cent of the total voter registration of the party designated in the district from which the member of the legislature may be elected.
4. If for a candidate for a county office or superior court judge, by a number of qualified electors who are qualified to vote for the candidate whose nomination petition they are signing equal to at least two per cent but not more than ten per cent of the total voter registration of the party designated in the county or district, provided that in counties with a population of two hundred thousand persons or more, a candidate for a county office shall have nomination petitions signed by a number of qualified electors who are qualified to vote for the candidate whose nomination petition they are signing equal to at least one-half of one per cent but not more than ten per cent of the total voter registration of the party designated in the county or district.
5. If for a candidate for a community college district, by a number of qualified electors who are qualified to vote for the candidate whose nomination petition they are signing equal to at least one-half of one per cent but not more than ten per cent of the total voter registration in the precinct as established pursuant to section 15-1441.
6. If for a candidate for county precinct committeeman, by a number of qualified electors who are qualified to vote for the candidate whose nomination petition they are signing equal to at least two per cent but not more than ten per cent of the party voter registration in the precinct or ten signatures, whichever is less.
7. If for a candidate for justice of the peace or constable, by a number of qualified electors who are qualified to vote for the candidate whose nomination petition they are signing equal to at least two per cent but not more than ten per cent of the party voter registration in the precinct.

8. If for a candidate for mayor or other office nominated by a city at large, by a number of qualified electors who are qualified to vote for the candidate whose nomination petition they are signing equal to at least five per cent and not more than ten per cent of the designated party vote in the city.

9. If for an office nominated by ward, precinct or other district of a city, by a number of qualified electors who are qualified to vote for the candidate whose nomination petition they are signing equal to at least five per cent and not more than ten per cent of the designated party vote in the ward, precinct or other district.

10. If for a candidate for an office nominated by a town at large, by a number of qualified electors who are qualified to vote for the candidate whose nomination petition they are signing equal to at least five per cent and not more than ten per cent of the vote in the town.

11. If for a candidate for a governing board of a school district, by a number of qualified electors who are qualified to vote for the candidate whose nomination petition they are signing equal to at least one-half of one per cent of the total voter registration in the school district if the governing board members are elected at large or one per cent of the total voter registration in the single member district if governing board members or joint technological education district board members are elected from single member districts. Notwithstanding the total voter registration in the school district or single member district, the maximum number of signatures required by this paragraph is four hundred.

12. If for a candidate for a governing body of a special district as described in title 48 by a number of qualified electors who are qualified to vote for the candidate whose nomination petition they are signing equal to at least one-half of one per cent of the vote in the special district but not more than two hundred fifty and not fewer than five signatures.

B. The basis of percentage in each instance referred to in subsection A of this section, except in cities, towns and school districts, shall be the number of voters registered in the designated party of the candidate as reported pursuant to section 16-168, subsection G on March 1 of the year in which the general election is held. In cities, the basis of percentage shall be the vote of the party for mayor at the last preceding election at which a mayor was elected. In towns, the basis of percentage shall be the highest vote cast for an elected official of the town at the last preceding election at which an official of the town was elected. In school districts, the basis of percentage shall be the total number of voters registered in the school district or single member district, whichever applies. The total number of voters registered for school districts shall be calculated using the periodic reports prepared by the county recorder pursuant to section 16-168, subsection G. The count that is reported on March 1 of the year in which the general election is held shall be the basis for the calculation of total voter registration for school districts.

C. In primary elections the signature requirement for party nominees, other than nominees of the parties entitled to continued representation pursuant to section 16-804, is at least one-tenth of one per cent of the total vote for the winning candidate or candidates for governor or presidential electors at the last general election within the district. Signatures must be obtained from qualified electors who are qualified to vote for the candidate whose nomination petition they are signing.

D. If new boundaries for congressional districts, legislative districts, supervisorial districts, justice precincts or election precincts are established and effective subsequent to March 1 of the year of a general election and prior to the date for filing of nomination petitions, the basis for determining the required number of nomination petition signatures is the number of registered voters in the designated party of the candidate in the elective office, district or precinct on the day the new districts or precincts are effective.

16-411. Designation of election precincts and polling places

A. Except as prescribed by subsection H, the board of supervisors of each county shall, on or before December 1 of each year preceding the year of a general election, by an order, establish a convenient number of election precincts in the county and define the boundaries thereof. Such election precinct boundaries shall be so established as included within election districts prescribed by law for elected officers of the state and its political subdivisions including community college district precincts, except those elected officers provided for in titles 30 and 48.

B. Not less than twenty days before a general or primary election, and at least ten days before a special election, the board shall designate one polling place

within each precinct where the election shall be held. Upon a specific finding of the board, included in the order or resolution designating polling places pursuant to this subsection, that no suitable polling place is available within a precinct, a polling place for such precinct may be designated within an adjacent precinct. Adjacent precincts may be combined if boundaries so established are included in election districts prescribed by law for state elected officials and political subdivisions including community college districts but not including elected officials prescribed by titles 30 and 48. The officer in charge of elections may also split a precinct for administrative purposes. Any such polling places shall be listed in separate sections of the order or resolution.

C. If the board fails to designate the place for holding the election, or if it cannot be held at or about the place designated, the justice of the peace in the precinct shall, two days before the election, by an order, copies of which he shall immediately post in three public places in the precinct, designate the place within the precinct for holding the election. If there is no justice of the peace in the precinct, or if he fails to do so, the election board of the precinct shall designate and give notice of the place within the precinct of holding the election.

D. The board is not required to designate a polling place for special district mail ballot elections held pursuant to article 8.1 of this chapter, but the board may designate one or more sites for voters to deposit marked ballots until 7:00 p.m. on the day of the election.

E. Except as provided in subsection F, a public school shall provide sufficient space for use as a polling place for any city, county or state election when requested by the officer in charge of elections.

F. The principal of the school may deny a request to provide space for use as a polling place for any city, county or state election if, within two weeks after a request has been made, he provides a written statement indicating a reason the election cannot be held in the school, including any of the following:

1. Space is not available at the school.
2. A disruption of the normal school activities would occur.

16-412. Effective date of new precincts

After establishing precincts as provided in section 16-411, the board of supervisors of each county shall deliver to the county recorder a complete description of these precincts immediately after adoption. The county recorder shall then transfer all the voters who reside in a new precinct as the result of this adoption by March 1 of the year of the next general election. The county recorder shall mail the notice of the precinct change to each household containing a registered voter, unless a sample ballot containing the precinct name or number is mailed prior to the primary election. For the purpose of conducting any election called pursuant to the laws of this state, precincts adopted under the provisions of section 16-411 shall become effective no later than March 1 of the year of the next general election.

16-413. Precincts; special district boundaries

A. Except as provided in subsection D of this section, the governing body of a special district, except a district organized under title 48, chapter 17, shall establish district election precincts that have the same boundaries as county election precincts pursuant to section 16-411 and designate one polling place within each precinct. In those cases where a district boundary bisects a county election precinct, that portion of the election precinct that is within the district shall be the district election precinct. The governing body may consolidate district election precincts if it deems it necessary and designate one polling place for the election precincts it consolidates.

B. The governing body shall provide the county recorder with a description of the district election precincts no later than sixty days before an election for which signature rosters are to be prepared.

C. In elections to establish special districts, the board of supervisors shall act as the governing body for purposes of this section.

D. If an election is a mail ballot election, the governing body shall not designate polling places but shall determine the number and location of sites where ballots may be returned.

16-541. Early voting

A. Any election called pursuant to the laws of this state shall provide for early

voting. Any qualified elector may vote by early ballot.

B. A qualified elector of a special district organized pursuant to title 48 shall be permitted to vote early in any special district mail ballot election as provided in article 8.1 of this chapter.

#### 16-542. Request for ballot

A. Within ninety days next preceding the Saturday before any election called pursuant to the laws of this state, an elector may make a verbal or signed request to the county recorder, or other officer in charge of elections for the applicable political subdivision of this state in whose jurisdiction the elector is registered to vote, for an official early ballot. In addition to name and address, the requesting elector shall provide the date of birth and state or country of birth or other information that if compared to the voter registration information on file would confirm the identity of the elector. If the request indicates that the elector needs a primary election ballot and a general election ballot, the county recorder or other officer in charge of elections shall honor the request. For any partisan primary election, if the elector is not registered as a member of a political party that is entitled to continued representation on the ballot pursuant to section 16-804, the elector shall designate the ballot of only one of the political parties that is entitled to continued representation on the ballot and the elector may receive and vote the ballot of only that one political party. The county recorder may establish on-site early voting locations at the recorder's office or any other locations in the county the recorder deems necessary.

B. Notwithstanding subsection A of this section, a request for an official early ballot from an absent uniformed services voter or overseas voter as defined in the uniformed and overseas citizens absentee voting act of 1986 (P.L. 99-410; 42 United States Code section 1973) that is received by the county recorder or other officer in charge of elections more than ninety days next preceding the Saturday before the election is valid.

C. The recorder or other officer in charge of elections shall mail postage prepaid to the address provided by the requesting elector, which address shall be the elector's residence address or the location where the elector is temporarily residing while absent from the precinct, the early ballot and the envelope for its return within five days after receipt of the official early ballots from the officer charged by law with the duty of preparing ballots pursuant to section 16-545. Only the elector may be in possession of that elector's unvoted early ballot. If the request is made by the elector within thirty days next preceding the Saturday before the election, such mailing must be made within forty-eight hours after receipt of the request. Saturdays, Sundays and other legal holidays are excluded from the computation of the forty-eight hour period prescribed by this subsection. If the request is made by an absent uniformed services voter or an overseas voter more than ninety days next preceding the Saturday before the election, the mailing shall be made within twenty-four hours after the early ballots are delivered pursuant to section 16-545, subsection B, excluding Sundays.

D. In order to receive an early ballot by mail, an elector's request that an early ballot be mailed to the elector's residence or temporary address must be received by the county recorder or other officer in charge of elections no later than 5:00 p.m. on the eleventh day preceding the election. An elector who appears personally no later than 5:00 p.m. on the Friday preceding the election at an on-site early voting location that is established by the county recorder or other officer in charge of elections shall be given a ballot and permitted to vote at the on-site location.

E. The county recorder or other officer in charge of early balloting shall provide an alphabetized list of all voters in the precinct who have requested and have been sent an early ballot to the election board of the precinct in which the voter is registered not later than the day prior to the election.

F. As a result of an emergency occurring between 5:00 p.m. on the second Friday preceding the election and 5:00 p.m. on the Monday preceding the election, qualified electors may request to vote early in the manner prescribed by the county recorder of their respective county. For purposes of this subsection, "emergency" means any unforeseen circumstances which would prevent the elector from voting at the polls.

G. A candidate or political committee may distribute early ballot request forms to voters. If the early ballot request forms include a printed address for return to an addressee other than a political subdivision, the addressee shall be the candidate or political committee that paid for the printing and

distribution of the request forms. All early ballot request forms that are received by a candidate or political committee shall be transmitted as soon as practicable to the political subdivision that will conduct the election.

#### 16-543. Application for ballot; United States service

Any absent uniformed services voter or overseas voter as defined in the uniformed and overseas citizens absentee voting act of 1986 (P.L. 99-410; 42 United States Code section 1973) may request an early ballot with a federal postcard application that contains both an early voter registration application and an early ballot application. Upon receipt of such application, the county recorder or other officer in charge of elections shall determine whether or not the elector is registered. If the applicant is so registered, the recorder or other officer in charge of elections shall forward to him an official early ballot. If the applicant is not registered, and the request is for a ballot for use in a county election but the federal postcard application is complete, the recorder shall forward an official early ballot to the applicant. If the applicant is not registered to vote and the federal postcard application is not used or complete, the recorder shall forward an affidavit of registration as provided in section 16-103 and shall at the same time forward to the unregistered applicant an official early ballot and affidavit.

#### 16-543.01. Procedures for voting with special write-in early ballots

A. Notwithstanding any other law, any elector who is an absent uniformed services voter or overseas voter as defined in the uniformed and overseas citizens absentee voting act of 1986 (P.L. 99-410; 42 United States Code section 1973) may request a special write-in early ballot if the elector submits with the request a statement that provides that due to military or other contingencies that preclude normal mail delivery the elector cannot vote an early ballot during the normal early voting period. The special write-in early ballots shall be provided for presidential electors and United States senator and representative in Congress.

B. The request for a special write-in early ballot may be made on a federal postcard application.

C. Upon receipt of such request, the county recorder shall immediately forward to the elector a special write-in early ballot and affidavit in a form prescribed and provided by the secretary of state. Upon receipt of such request, the recorder shall determine whether or not the elector is registered. If the elector is so registered, the recorder shall forward to him a special write-in early ballot and affidavit. If the applicant is not registered but the federal postcard application is complete, the recorder shall forward a special write-in early ballot to the applicant. If the applicant is not registered and the federal postcard application is not used or complete, the recorder shall forward an affidavit of registration as provided in section 16-103 and shall at the same time forward to the unregistered applicant a special write-in early ballot and affidavit. The recorder shall send with the special write-in early ballot a list of all candidates who have qualified for the primary ballot by the sixtieth day before the primary election or who have qualified for the general ballot by the fiftieth day before the general election. The elector shall be entitled to write in the name of any candidate who has qualified for a specific office listed on the ballot, whether the candidate is seeking the nomination or election to such office.

D. Write-in votes on special write-in early ballots shall be counted in the same manner provided by law for the counting of other write-in votes.

#### 16-543.02. Federal write-in early ballots; procedure

A. An overseas voter as defined in the uniformed and overseas citizens absentee voting act of 1986 (P.L. 99-410; 42 United States Code section 1973) who is absent from the place of residence in this state where he is otherwise qualified to vote may use a federal write-in early ballot in a general election for the offices of presidential elector and United States senator and representative in Congress if the voter applies for a regular early ballot at least thirty days before the general election and does not receive that early ballot.

B. A federal write-in early ballot of an overseas voter shall not be counted if any of the following conditions are met:

1. The ballot is submitted from any location in the United States.
2. The application of the overseas voter for a regular early ballot is received by the county recorder or other officer in charge of elections less than thirty days before the general election.
3. A regular early ballot from the overseas voter is received by the county recorder or other officer in charge of elections not later than 7:00 p.m. on election day.

C. An overseas voter who completes a federal write-in early ballot may designate a candidate by writing in the name of the candidate or by writing in the name of a political party, in which case the ballot shall be counted for the candidate of that political party. In the case of the offices of president and vice-president, a vote for a named candidate or in the name of the political party shall be counted as a vote for that candidate's or party's presidential electors. Any abbreviation, misspelling or other minor variation in the form of the name of a candidate or political party shall be disregarded in determining the validity of the ballot if the intention of the voter can be ascertained.

16-545. Early ballot

A. The early ballot shall be one prepared for use in the precinct in which the applicant resides and, if a partisan primary election, of the political party with which the applicant is affiliated as shown by the affidavit of registration. The ballot shall be identical with the regular official ballots, except that it shall have printed or stamped on it "early".

B. The officer charged by law with the duty of preparing ballots at any election shall prepare the official early ballot and deliver a sufficient number to the recorder or other officer in charge of elections not later than the thirtieth day preceding the Saturday before the election.

16-546. Early votes

A. Early votes may be cast on paper ballots or ballot cards, except that any county, city or town in which electronic machines are used shall have a punch card early ballot suitable for data processing machines which shall be identical to those used in precinct voted ballots. Such ballot shall provide the same information as a marked paper ballot.

B. In the event early voter ballots are to be tabulated by an electronic or electromechanical tabulating device, the county recorder or other officer in charge of elections may also deliver to the applicant a marking device which would make a mark suitable for use with the electronic or electromechanical device or a supply of stickers which would be suitable for use with the electronic or electromechanical tabulating device.

16-547. Ballot affidavit; form

A. The early ballot shall be accompanied by an envelope bearing upon the front the name, official title and post office address of the recorder or other officer in charge of elections and upon the other side a printed affidavit in substantially the following form:

State of Arizona  
County of \_\_\_\_\_

I, \_\_\_\_\_, do solemnly swear that I am the identical person whose name is signed to this affidavit and that this name and signature are my true name and signature, or if I did not personally sign, it was because of physical disability and that I requested \_\_\_\_\_ (name of person signing affidavit) to sign for me, that I have not voted and will not vote in this election in any other state during the calendar year of this affidavit and that I personally voted the enclosed ballot or that it was marked according to my instructions because I was unable to do so. I understand that knowingly voting more than once in any election is a class 5 felony. I declare that I am more than eighteen years of age, that I am a qualified elector of the state of Arizona and the county of \_\_\_\_\_ and that I reside at \_\_\_\_\_. If a challenge is filed against my early ballot, I understand that a copy of the challenge will be sent to me by first class mail and that I may have as little as forty-eight hours' notice of an opportunity to appear. For purposes of notifying me of a ballot challenge between the time I return my ballot and seven days after election day, please use the following address: \_\_\_\_\_. (If no address is provided, notice will be mailed to the mailing address listed on the registration rolls.)

\_\_\_\_\_  
Elector

B. The face of each envelope in which a ballot is sent to a federal postcard applicant or in which a ballot is returned by such applicant to the recorder or other officer in charge of elections shall be in the form prescribed in accordance with the uniformed and overseas citizens absentee voting act of 1986 (P.L. 99-410; 42 United States Code section 1973ff). Otherwise, the envelopes shall be the same as those used to send ballots to, or receive ballots from, other early voters.

C. The county recorder or other officer in charge of elections shall supply printed instructions to early voters that direct them to sign the affidavit, mark the ballot and return both in the enclosed self-addressed envelope. The instructions shall include the following statement:

In order to be valid and counted, the ballot and affidavit must be delivered to the office of the county recorder or other officer in charge of elections or may be deposited at any polling place in the county no later than 7:00 p.m. on election day.

16-548. Preparation and transmission of ballot

A. The early voter shall make and sign the affidavit and shall then mark his ballot in such a manner that his vote cannot be seen. The early voter shall fold the ballot, if a paper ballot, so as to conceal the vote and deposit the voted ballot in the envelope provided for that purpose, which shall be securely sealed and, together with the affidavit, delivered or mailed to the county recorder or other officer in charge of elections of the political subdivision in which the elector is registered or deposited by the voter or the voter's agent at any polling place in the county. In order to be counted and valid, the ballot must be received by the county recorder or other officer in charge of elections or deposited at any polling place in the county no later than 7:00 p.m. on election day.

B. If the early voter is an overseas citizen, a qualified elector absent from the United States or in the United States service, a spouse or dependent residing with the early voter or a qualified elector of a special district mail ballot election as provided in article 8.1 of this chapter, the early voter may subscribe to the affidavit before and obtain the signature and military identification number or passport number, if available, of any person who is a United States citizen eighteen years of age or older.

16-549. Special election boards; procedure for voting ill or disabled electors; expenses

A. The county recorder or other officer in charge of elections, for the purpose of making it possible for qualified electors who are ill or disabled to vote, may appoint such number of special election boards as needed. In a partisan election, each such board shall consist of two members, one from each of the two political parties which cast the highest number of votes in the state in the last preceding general election. The county chairman of each such party shall furnish, within sixty days prior to the election day, the county recorder or other officer in charge of elections with a list of names of qualified electors within his political party, and such additional lists as may be required, from which the county recorder or other officer in charge of elections shall appoint members to such special election boards. The county recorder or other officer in charge of elections may refuse for cause to appoint or may for cause remove a member of this board. A person who is a candidate for an office other than precinct committeeman is not eligible to serve on the special election board for that election.

B. Members of special election boards appointed under the provisions of this section shall be reimbursed for travel expenses in the manner provided by law and shall also receive such compensation as the board of supervisors or the governing body prescribes, all of which shall be paid by the county or other political subdivision.

C. In lieu of the mailed early ballot procedure, any qualified elector who is confined as the result of a continuing illness or physical disability and is, therefore, not able to go to the polls on the day of the next election and who does not wish to vote by the mailed early ballot procedure, may make a verbal or a signed written request to the county recorder or other officer in charge of elections to have a ballot personally delivered to him by the special election board at his place of confinement within the county or other political subdivision. The ballot shall be delivered to him in person by a special election board as provided in this section. Such requests must be made by 5:00 p.m. on the second Friday before the election.

D. Qualified electors who become ill or disabled after the second Friday before the election may nevertheless request personal ballot delivery pursuant to this section, and the county recorder or other officer in charge of elections shall when possible honor such requests up to and including the last day before the election. Qualified electors who are admitted to a hospital after 5:00 p.m. on the second Friday preceding the election and before 5:00 p.m. on election day may request the county recorder or other officer in charge of elections to provide a special election board with a ballot at the elector's place of

confinement. If the county recorder or other officer in charge of elections is able to accommodate the request, the voted ballot of the elector shall be sealed in an envelope and shall be processed as a ballot to be verified pursuant to section 16-584.

E. The manner and procedure of voting shall be as provided in section 16-548, except that the marked ballot in the sealed envelope shall be handed by the elector to the special election board and shall be delivered by the board to the county recorder or other officer in charge of elections.

**16-550. Receipt of voter's ballot**

A. Upon receipt of the envelope containing the early ballot and the completed affidavit, the county recorder or other officer in charge of elections shall compare the signatures thereon with the signature of the elector on his registration form. If satisfied that the signatures correspond, the recorder or other officer in charge of elections shall hold them unopened in accordance with the rules of the secretary of state.

B. The recorder or other officer in charge of elections shall thereafter safely keep the affidavits and early ballots in his office until delivered pursuant to section 16-551.

C. The county recorder shall send a list of all voters who were issued early ballots to the election board of the precinct in which the voter is registered.

**16-551. Early election board**

A. The board of supervisors or the governing body of the political subdivision shall appoint one or more early election boards to serve at places to be designated by the board of supervisors or the governing body to canvass and tally early election ballots. Members of early boards shall be selected in accordance with the provisions for selecting members of regular election boards as provided in section 16-531.

B. If an electronic voting system is in use for early voting, the early election board shall consist of at least one inspector and two judges who shall perform the processing requirements in accordance with the rules issued by the secretary of state. The inspector and judges shall be appointed in the same manner by party as provided in section 16-531.

C. All early ballots received by the county recorder or other officer in charge of elections before 7:00 p.m. on election day and the original affidavit of the voter shall be delivered to the early election boards for processing as provided in the rules of the secretary of state. The office of the county recorder or other officer in charge of elections shall remain open until 7:00 p.m. on election day for the purpose of receiving early ballots. In no event shall partial or complete tallies of the early election board be released or divulged before one hour following the closing of the polls on election day.

D. The necessary printed blanks for poll lists, tally lists, lists of voters, ballots, oaths and returns, together with envelopes in which to enclose the returns, shall be furnished by the board of supervisors or the governing body of the political subdivision to the early election board for each election precinct at the expense of the county or the political subdivision.

**16-552. Early ballots; processing; challenges**

A. In a jurisdiction that uses punch card ballots, the early election board, immediately upon receipt of the early ballots, shall, as provided by this section, cast separately for each precinct the early ballots which have been received. In a jurisdiction that uses optical scan ballots, the officer in charge of elections may use the procedure prescribed by this section or may request approval from the secretary of state for a different method for processing early ballots. The request shall be made in writing at least ninety days before the election for which the procedure is intended to be used.

B. The early election board shall check the voter's affidavit on the envelope containing the early ballot. If it is found to be sufficient, the vote shall be allowed. If the affidavit is insufficient, the vote shall not be allowed.

C. The county chairman of each political party represented on the ballot may, by written appointment addressed to the early election board, designate party representatives and alternates to act as early ballot challengers for the party. No party may have more than the number of such representatives or alternates which were mutually agreed upon by each political party to be present at one time. If such agreement cannot be reached, the number of representatives shall be limited to one for each

political party.

D. An early ballot may be challenged on any grounds set forth in section 16-591. All challenges shall be made in writing with a brief statement of the grounds prior to the early ballot being placed in the ballot box. A record of all challenges and resulting proceedings shall be kept in substantially the same manner as provided in section 16-594. If an early ballot is challenged, it shall be set aside and retained in the possession of the early election board or other officer in charge of early ballot processing until a time that the early election board sets for determination of the challenge, subject to the procedure in subsection E of this section, at which time the early election board shall hear the grounds for the challenge and shall decide what disposition shall be made of the early ballot by majority vote. If the early ballot is not allowed, it shall be handled pursuant to subsection G of this section.

E. Within twenty-four hours of receipt of a challenge, the early election board or other officer in charge of early ballot processing shall mail, by first class mail, a notice of the challenge including a copy of the written challenge, and also including the time and place at which the voter may appear to defend the challenge, to the voter at the mailing address shown on the request for early ballot or, if none was provided, to the mailing address shown on the registration rolls. Notice shall also be mailed to the challenger at the address listed on the written challenge and provided to the county chairman of each political party represented on the ballot. The board shall meet to determine the challenge at the time specified by the notice but, in any event, not earlier than ninety-six hours after the notice is mailed, or forty-eight hours if the notifying party chooses to deliver the notice by overnight or hand delivery, and not later than 5:00 p.m. on the Monday following the election. The board shall provide the voter with an informal opportunity to make, or to submit, brief statements regarding the challenge. The board may decline to permit comments, either in person or in writing, by anyone other than the voter, the challenger and the party representatives. The burden of proof is on the challenger to show why the voter should not be permitted to vote. The fact that the voter fails to appear shall not be deemed to be an admission of the validity of the challenge. The early election board or other officer in charge of early ballot processing is not required to provide the notices described in this subsection if the written challenge fails to set forth at least one of the grounds listed in section 16-591 as a basis for the challenge. In that event, the challenge will be summarily rejected at the meeting of the board. Except for election contests pursuant to section 16-672, the board's decision is final and may not be appealed.

F. If the vote is allowed, the board shall open the envelope containing the ballot in such a manner that the affidavit thereon is not destroyed, take out the ballot without unfolding it or permitting it to be opened or examined and show by the records of the election that the elector has voted.

G. If the vote is not allowed, the affidavit envelope containing the early ballot shall not be opened and the board shall mark across the face of such envelope the grounds for rejection. The affidavit envelope and its contents shall then be deposited with the opened affidavit envelopes and shall be preserved with official returns. If the voter does not enter an appearance, the board shall send the voter a notice stating whether the early ballot was disallowed and, if disallowed, providing the grounds for the determination. The notice shall be mailed by first class mail to the voter's mailing address as shown on the registration rolls within three days after the board's determination.

H. Party representatives and alternates may be appointed as provided in subsection C of this section to be present and to challenge the verification of questioned ballots pursuant to section 16-584 on any grounds permitted by this section. Questioned ballots which are challenged shall be presented to the early election board for decision under the provisions of this section.

**16-821. County committee; vacancy in office of precinct committeeman**

A. At the primary election the members of a political party entitled to representation pursuant to section 16-804 residing in each precinct shall choose one of their number as a county precinct committeeman, and the members shall choose one additional precinct committeeman for each one hundred twenty-five voters or major fraction thereof registered in the party in the precinct as reported pursuant to section 16-168, subsection G on March 1 of the year in which the general election is held. The whole number of precinct committeemen of a political party shall constitute the county committee of the party.

B. The board of supervisors upon the recommendation of the county chairman, or the recommendation of a committee designated in the bylaws of the county committee for that purpose, shall determine when a vacancy exists in the office of

precinct committeeman. If a vacancy exists, the vacancy shall be filled by the board of supervisors from a list of names submitted by the county chairman of the appropriate political party. Only a precinct committeeman elected at the primary election prior to the date of a state or county committee organizing meeting shall be permitted to vote at such meeting. The criteria used to establish when a vacancy exists in the office of precinct committeeman shall be as established in section 38-291.

16-822. Precinct committeemen; eligibility; vacancy; duties

A. Any member of a recognized political party who is a registered voter in the precinct is eligible to seek the office of precinct committeeman of his party in that precinct.

B. In addition to other provisions of law regarding removal from office, a vacancy shall exist in the office of precinct committeeman when the precinct committeeman moves from the precinct from which elected or changes his political party from the party in which he was elected.

C. The minimum duties of a precinct committeeman shall be to assist his political party in voter registration and to assist the voters of his political party to vote on election days. Additional duties shall be as provided for in the state committee bylaws of the party of which he is a member.

16-823. Legislative district committee; organization; boundary change; reorganization

A. A political party entitled, pursuant to section 16-801 or 16-804, to representation on the ballot may establish a district party committee for any legislative district as prescribed by law.

B. A district party committee established pursuant to subsection A of this section shall consist of the precinct committeemen residing in the district and elected pursuant to section 16-821.

C. Each district party committee established pursuant to subsection A of this section shall meet no earlier than the second Saturday after the general election provided for in section 16-211 and no later than the first Saturday in the following December and organize by electing from its membership a chairman, two vice-chairmen, a secretary and a treasurer. The latter two offices may be filled by the same person. The chairman of the district committee is ex officio a member of the county committee of the county in which a plurality of the district's registered voters resides.

D. Each district party committee established pursuant to subsection A of this section shall meet after the effective date of reapportionment legislation that realigns or changes legislative district boundaries and organize according to the new boundaries, electing from its membership a chairman, two vice-chairmen, a secretary and a treasurer. The latter two offices may be filled by the same person. The chairman of the district committee is ex officio a member of the county committee of the county in which a plurality of the district's registered voters resides. The effective date for reapportionment legislation as provided in this subsection shall be as provided in article IV, part 1, section 1, Constitution of Arizona.

E. In the event the reapportionment legislation is challenged in court or by the United States justice department, the district organizations in effect before the passage of the reapportionment legislation shall continue to function along with the new district organizations created in accordance with subsection D of this section until the final settlement or adjudication of any legal challenge to the reapportionment legislation. Upon the final settlement or adjudication of any legal challenge to the reapportionment legislation the district organizations in effect before the enactment of the reapportionment legislation are considered dissolved.

F. If the boundaries of any district are changed as a result of legal action, each district party committee in that district shall meet as soon as possible and organize according to the boundaries that result from the legal action. Upon organization pursuant to this subsection all prior district organizations are dissolved.

G. For purposes of the election prescribed in subsection D of this section the district committee shall consist of all precinct committeemen residing in the district who were serving in such position at least thirty days prior to the enactment of reapportionment legislation.

16-824. Meeting, organization and officers of county committee

A. The county committee shall meet for the purpose of organizing no earlier

than ten days after the last organizing meeting of the legislative districts which are part of the county, and in any event no later than the second Saturday in January of the year following a general election. The county committee shall elect from its membership a chairman, a first vice-chairman, a second vice-chairman, a secretary and a treasurer. The latter two offices may be filled by the same person. The chairman of the county committee shall be ex officio a member of the state committee.

B. The chairman of the county committee shall give notice of the time and place of such meeting by mail to each precinct committeeman at least ten days prior to the date of such meeting.

16-825. State committee

The state committee of each party shall consist, in addition to the chairman of the several county committees, of one member of the county committee for every three members of the county committee elected pursuant to section 16-821. The state committeemen shall be chosen at the first meeting of the county committee from the committee's elected membership.

16-825.01. State committee; vacancy; filling of vacancy

A. In counties with populations of less than five hundred thousand persons, a vacancy shall exist in the state committee when a member moves from the county from which elected. In counties with populations of five hundred thousand or more persons, a vacancy shall exist in the state committee when a member moves from the legislative district from which elected. All members must be a member of their county committee.

B. In the event of a vacancy in the office of state committeeman, in counties with populations of less than five hundred thousand persons, such vacancy shall be filled by appointment made by the state chairman with the advice and consent of the county chairman of the county in which the vacancy occurred. In counties with populations of five hundred thousand or more persons, such vacancy shall be filled by appointment made by the state chairman with the advice and consent of the county chairman of the county in which the vacancy occurred and the district chairman of the district in which the vacancy occurred, and shall be filled by a person who resides in the same district in which the vacancy occurred.

16-826. Meeting, organization and officers of state committee

A. The state committee shall meet in the city where the state capitol is located no earlier than ten days after the last county meeting of the party and in any event no later than the fourth Saturday in January following a general election and organize by electing from its membership a chairman, a secretary and a treasurer.

B. The chairman of the state committee shall cause notice of the time and place of such meeting to be mailed to each state committeeman at least ten days prior to the date of such meeting.

16-827. Executive committee of state committee

The executive committee of the state committee shall consist of the elected officers of the state committee, the national committeeman and committeewoman, the county chairman and first and second county vice-chairmen from each county, and three members at large from each congressional district. State committee bylaws may provide for additional voting or ex officio members of the executive committee of the state committee. The chairman of the state committee shall be ex officio chairman of the executive committee.

16-828. Proxies

A. A political party may choose, through its bylaws, to allow the use of proxies at its meetings, in which event the following shall be minimum regulations:

1. No proxy shall be given by a member of the state committee for use at a meeting of the committee except to a qualified elector of the county where the member resides.

2. No proxy shall be given by a member of the county committee for use at a meeting of the committee except to a qualified elector of the precinct where the member resides.

B. The duration of any proxy so given shall extend only for the length of the meeting for which it is given.

C. Every proxy shall be attested by a notary public or two witnesses.